



Ministry of Food and Disaster Management

Comprehensive Disaster Management Programme (CDMP)

October 5, 2005

GoB Vision on Disaster Management:

- to reduce the vulnerability of people, especially the poor, to the effects of natural, environmental and human induced hazards to a manageable and acceptable humanitarian level

MoFDM Mission:

- to bring a paradigm shift in disaster management from conventional response and relief to a more comprehensive risk reduction culture and to promote food security as an important factor in ensuring the resilience of the communities to hazards

Overall Objective:

- to strengthen the capacity of the Bangladesh Disaster Management System to reduce unacceptable risk and improve response and recovery management at all levels and to effectively integrate and manage Bangladesh's food security system

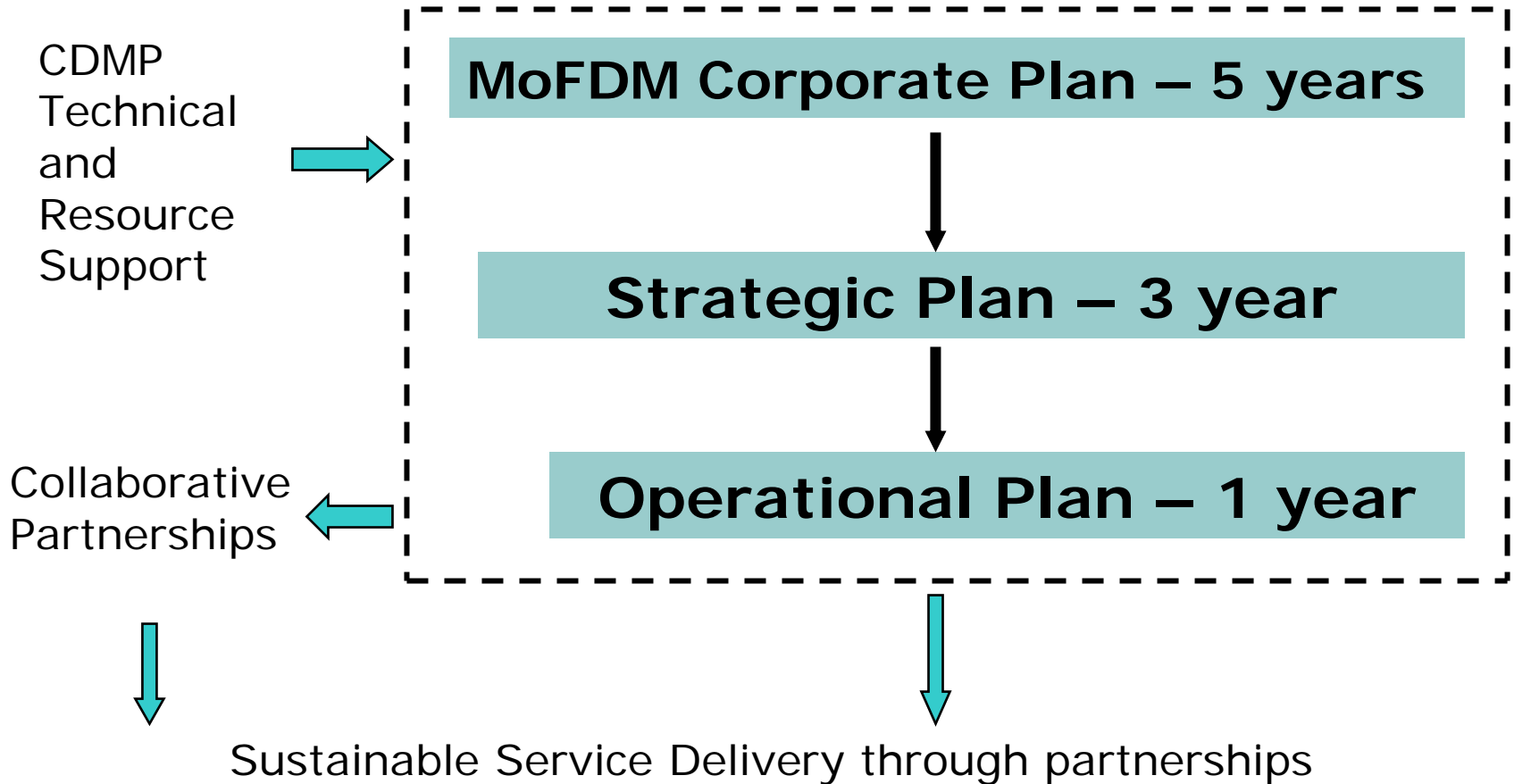


Corporate Plan A Framework for Action 2005-2009



The long-term vision of the Government of the People's Republic of Bangladesh on Disaster Management is to reduce the vulnerability of people, especially the poor, to the effects of natural, environmental and human-induced hazards to a manageable and acceptable humanitarian level.

Planning Framework



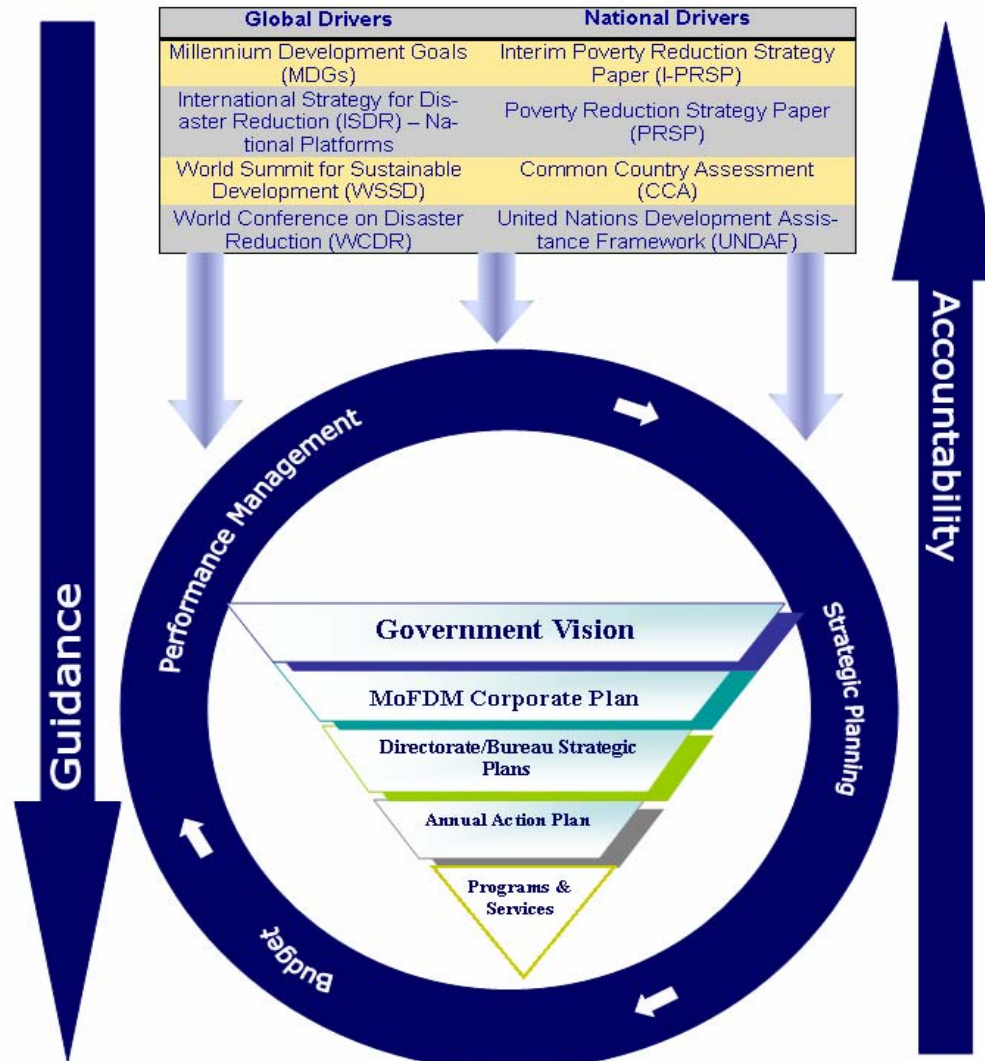
The Corporate plan as an outcome of change process facilitated by international and national drivers

The launch of MoFDM Corporate Plan (CP) also symbolizes Bangladesh's strong determination to achieving the internationally agreed development goals....

Following international and national drivers underlined the imperative of putting the CP in place

- IDNDR
- ISDR Platform
- WSSD
- MDGs
- PRSP
- National Workshop on Floods 2004
- WCDR (Hyogo) Declaration

A look into the diagram in the following slide will make it clear

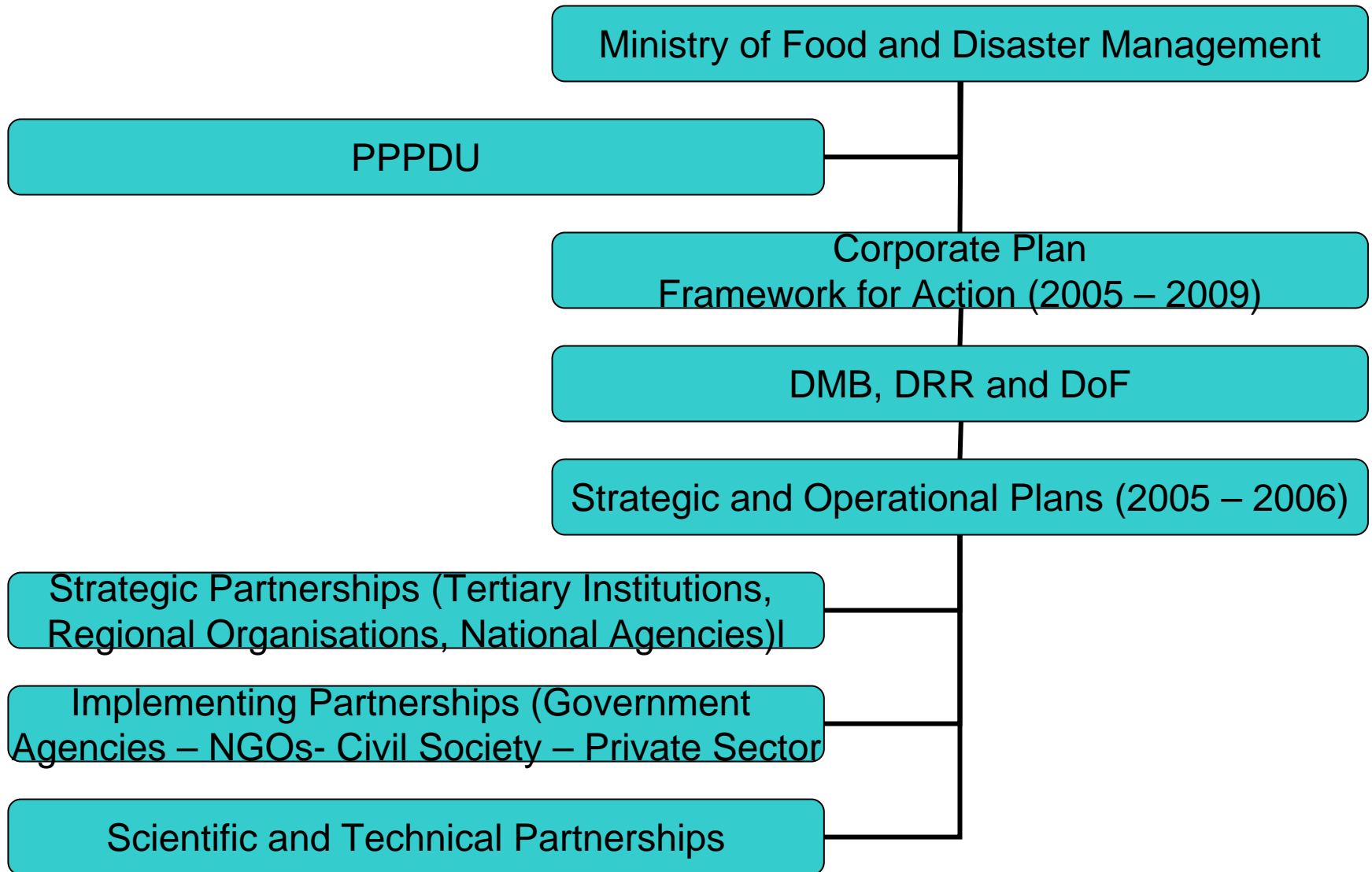


Disaster Management Framework for Action

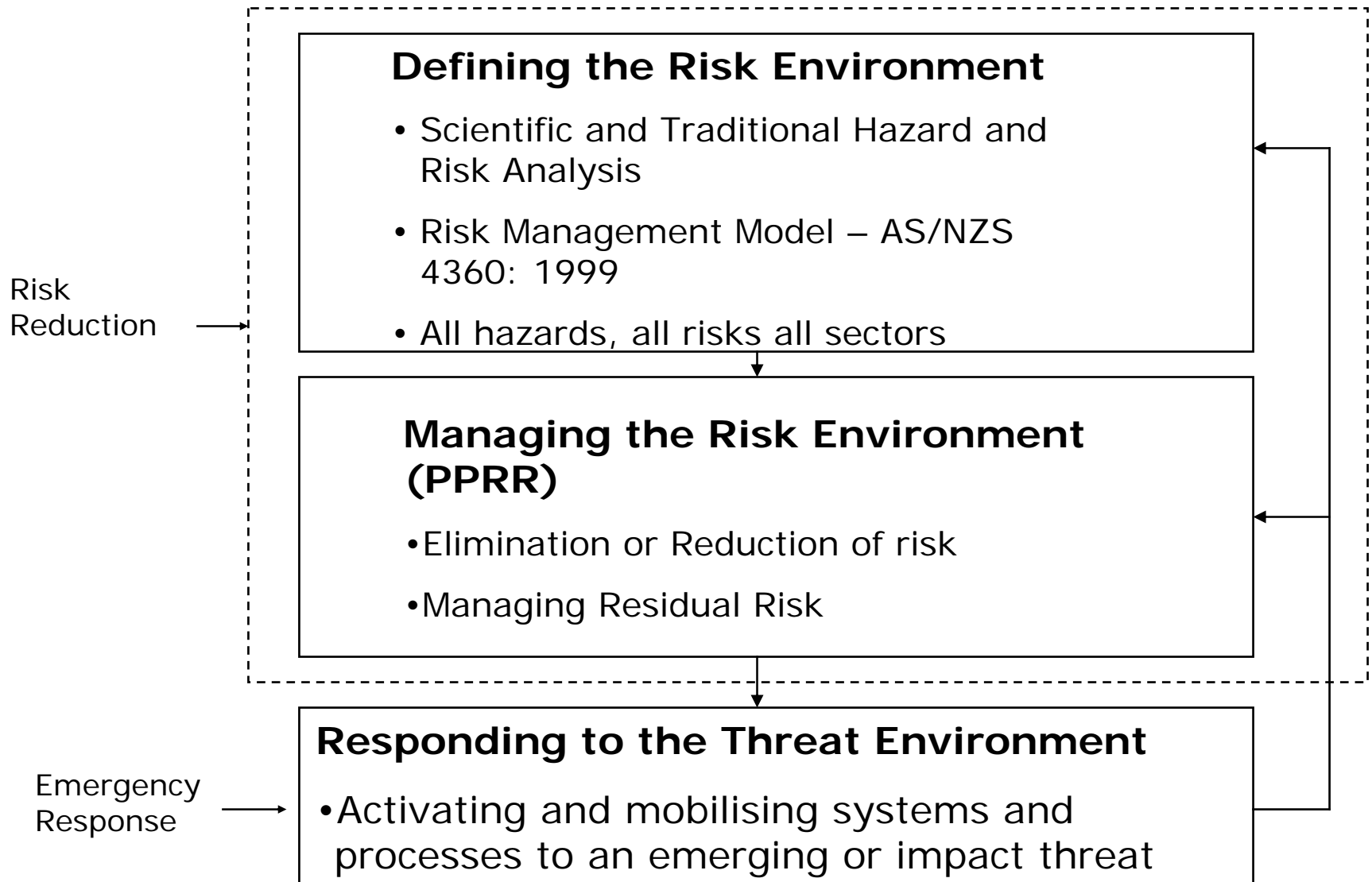
Strategic Focus for Disaster Management

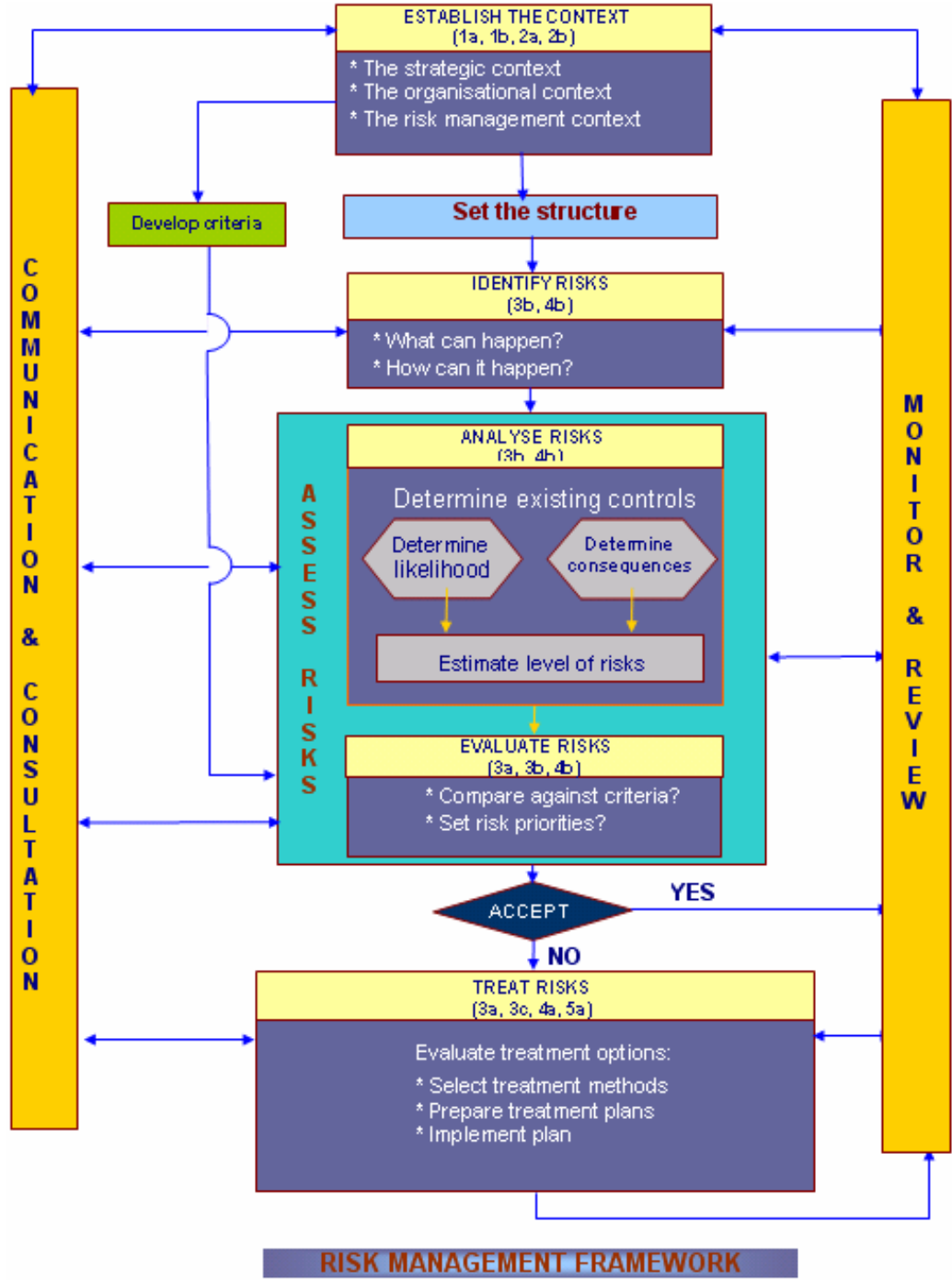
- ❑ Professionalising the Disaster Management System
- ❑ Mainstreaming
- ❑ Community Empowerment
- ❑ Expanding risk reduction across a broader range of hazards
- ❑ Strengthening emergency response systems
- ❑ Maintaining and strengthening the national food security system

National Risk Reduction Framework



Disaster Management Model - Bangladesh





RISK MANAGEMENT FRAMEWORK

A Comprehensive Approach

- The four key elements:
 1. Getting the PPRR balance right – Scientific and Traditional hazard and risk analysis
 2. Moving from generic to specific risk programmes – based on scientific and traditional risk assessments.
 3. Mainstreaming risk reduction
 4. Empowering stakeholders partners and communities

Benefits of CDMP Risk Management Approach

- removes the guesswork as to what should be done and where
- ensures coverage of:
 - all geographical areas;
 - all hazards;
 - all risks;
 - all sectors
- provides a “big picture” strategic framework for achieving mainstreaming and determining priorities related to the above.

CDMP Structure

Strategic Focus Areas	Corresponding components	Implementing agency
Professionalizing the DM system	C1a - PPPDU C1b- Professional Skilling of MoFDM	PPPDU PPPDU
Partnership Development	C2a – Advocacy C2b – Capacity Building	DMB DMB
Community Empowerment	C3a – Programme Gap Analysis C3b – Risk Reduction Planning C3c - LDRRF	PPPDU DRR PPPDU
Expanding Preparedness programmes across a broader range of hazards	C4a – Urban Search & Rescue C4b – Climate Change & Research	BFS&CD DoE
Strengthening emergency response capabilities	C5a – DMIC & Emergency Procedures	PPPDU

CDMP Framework

Corporate / Strategic / Action Plans

