

Post 'SIDR' Relief Operations Coordination Centre

Ground level coord requirement
assessed on 16 Nov 07

Started functioning - 17 Nov 07

More than **8.5 million people in 30 Districts** are known to have been affected by the cyclonic storm.

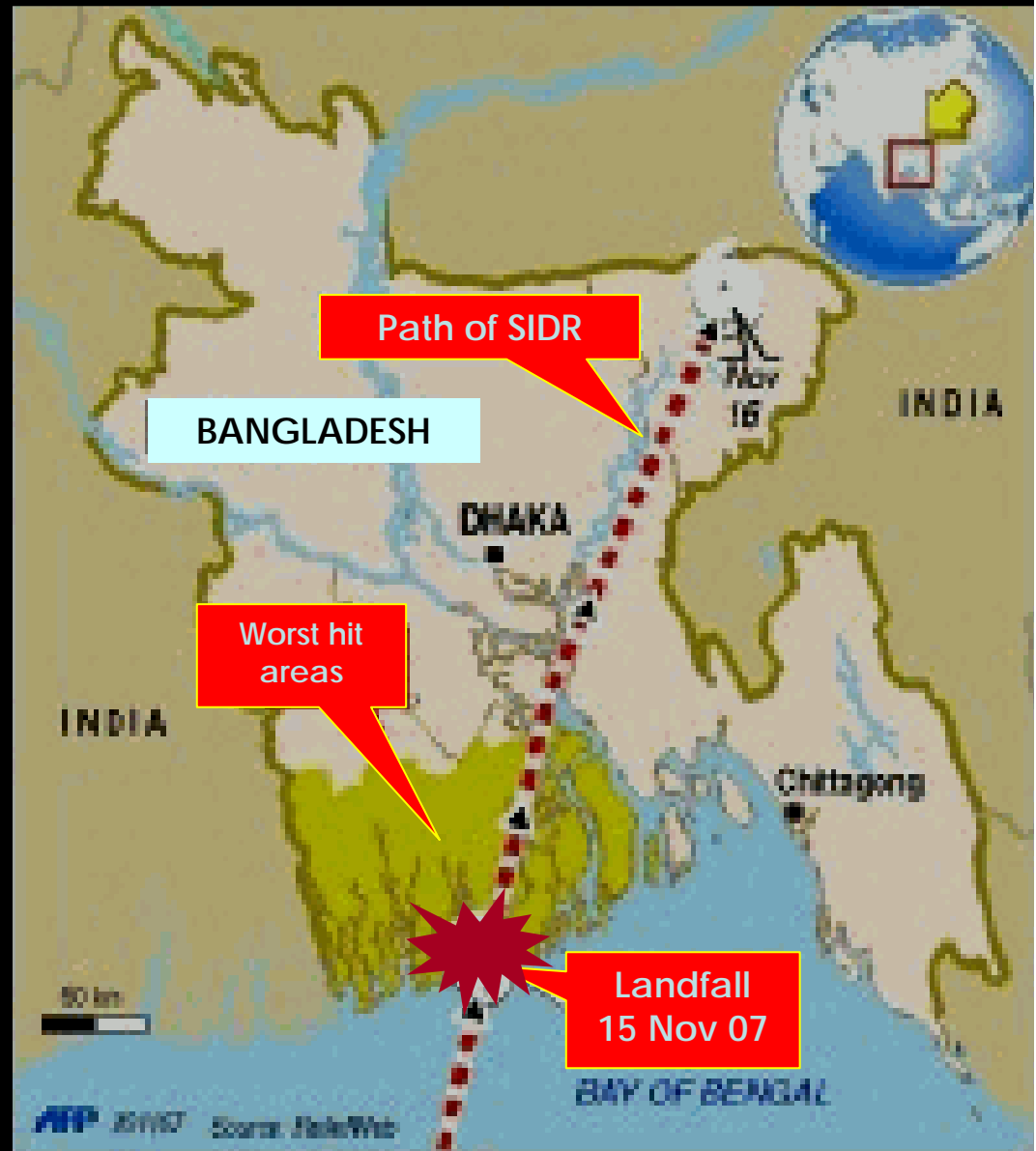
Official reports indicated an increasing **death toll over 3300 people, with a further 863 missing and 773 injured.**

Over **563,000 homes** were destroyed and a further **885,000 houses** were partially damaged.

An estimated **1100,000 acres** of crops were damaged.

Extensive damages to roads and public buildings are also evident.

The worst affected areas include Patuakhali, Pirojpur, Bagerhat, Barguna, Barisal, Bhola, Shatkhira, Gopalganj and Jhalkhati districts.



- BARGUNA (5)

- PATHARGHATA
- AMTOLI
- BAMNA
- SADAR

- PIROJPUR (7)

- BHANDARIA
- MOTHBARIA
- ZIA NAGAR

- MONGLA (D CHAR)

- PATUAKHALI (7)

- GOLACHIPA
- KOLAPARA
- MIRZAGANJ
- RANGABALI

- BAGERHAT (9)

- SHORONKHOLA
- MORALGANJ

- JHALOKATHI (4)

- KATHALIA

WORST AFFECTED UNIONS

SER	DISTRICT	UZ	TOTAL UNIONS	AFFECTED UNIONS
1	BARGUNA	PATHARGHATA	8	6
2		AMTALI	11	7
3		BAMNA	4	3
4		SADAR	10	7
5	PIROJPUR	BHANDARIA	7	3
6		MOTHBARIA	11	5
7		ZIA NAGAR	3	3
8	BAGHERHAT	SHORONKHOLA	4	2
9		MORALGANJ	17	11
10	JHALKATHI	KATHALIA	6	4
11	PATUAKHALI	GOLACHIPA	17	9
12		KOLAPARA	10	7
13		MIRZAGANJ	6	4
TOTAL		13	114	71

MISSION

COORD, FACILITATE

AND

CONDUCT

POST 'SIDR' RELIEF OPERATIONS

Damage Assessment



Need Assessment



Need Fulfillment



Immediate
Needs



Mid/Long
Term Needs

IMMEDIATE NEEDS

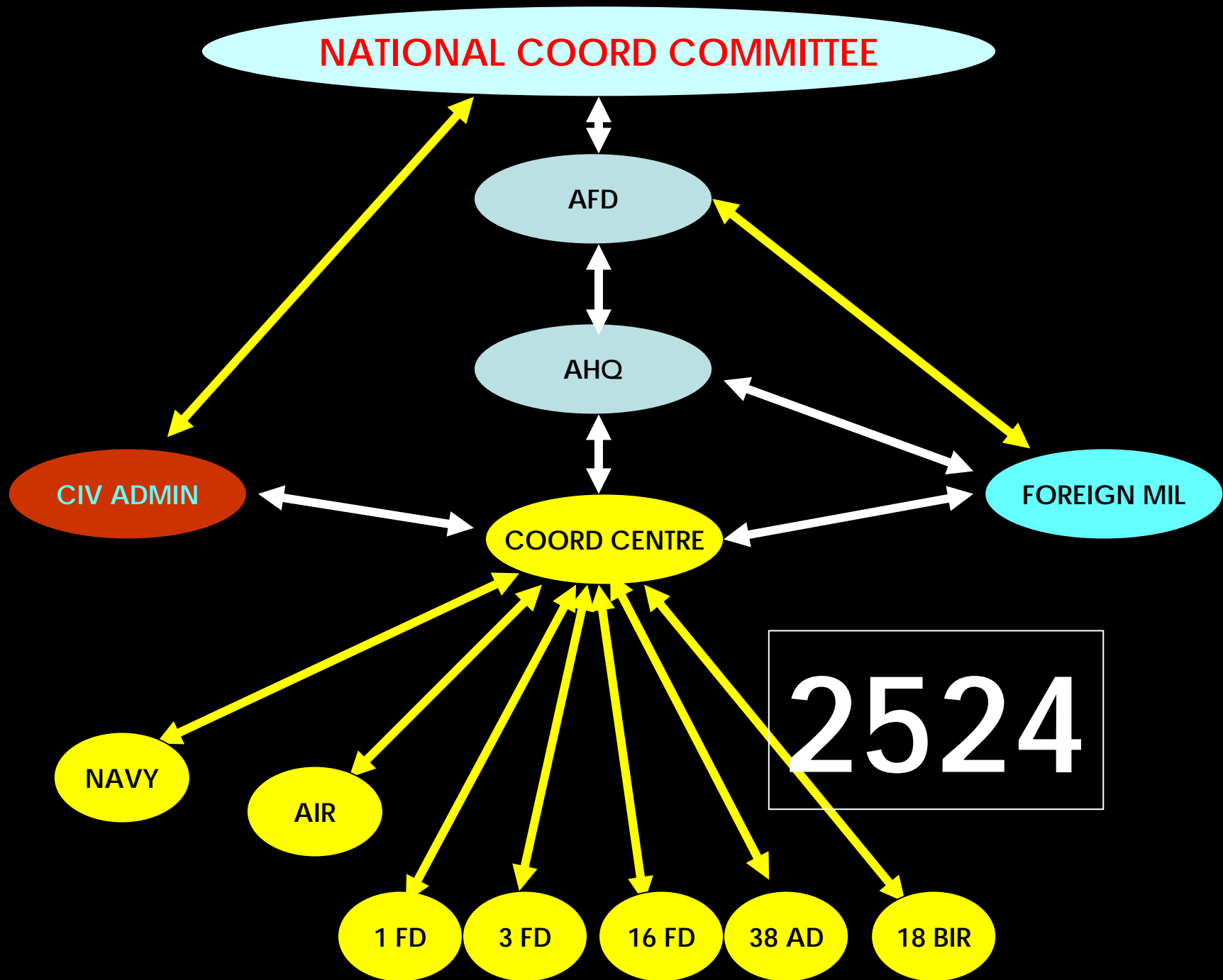
- PURE DRINKING WATER (REVERSE OSMOSIS WATER TREATMENT PLANT)
- FOOD GRAIN (INCL BABY FOOD), EDIBLE OIL ETC
- CLOTHING SPECIALLY WINTER CLOTHINGS
- MEDICARE INCL FLOATING HOSPITALS
- CASH MONEY
- ARRANGEMENT FOR SHELTER
- RESTORATION OF ELEC, TELEPHONE AND TRANSPORTATION

MID/LONG TERM NEEDS

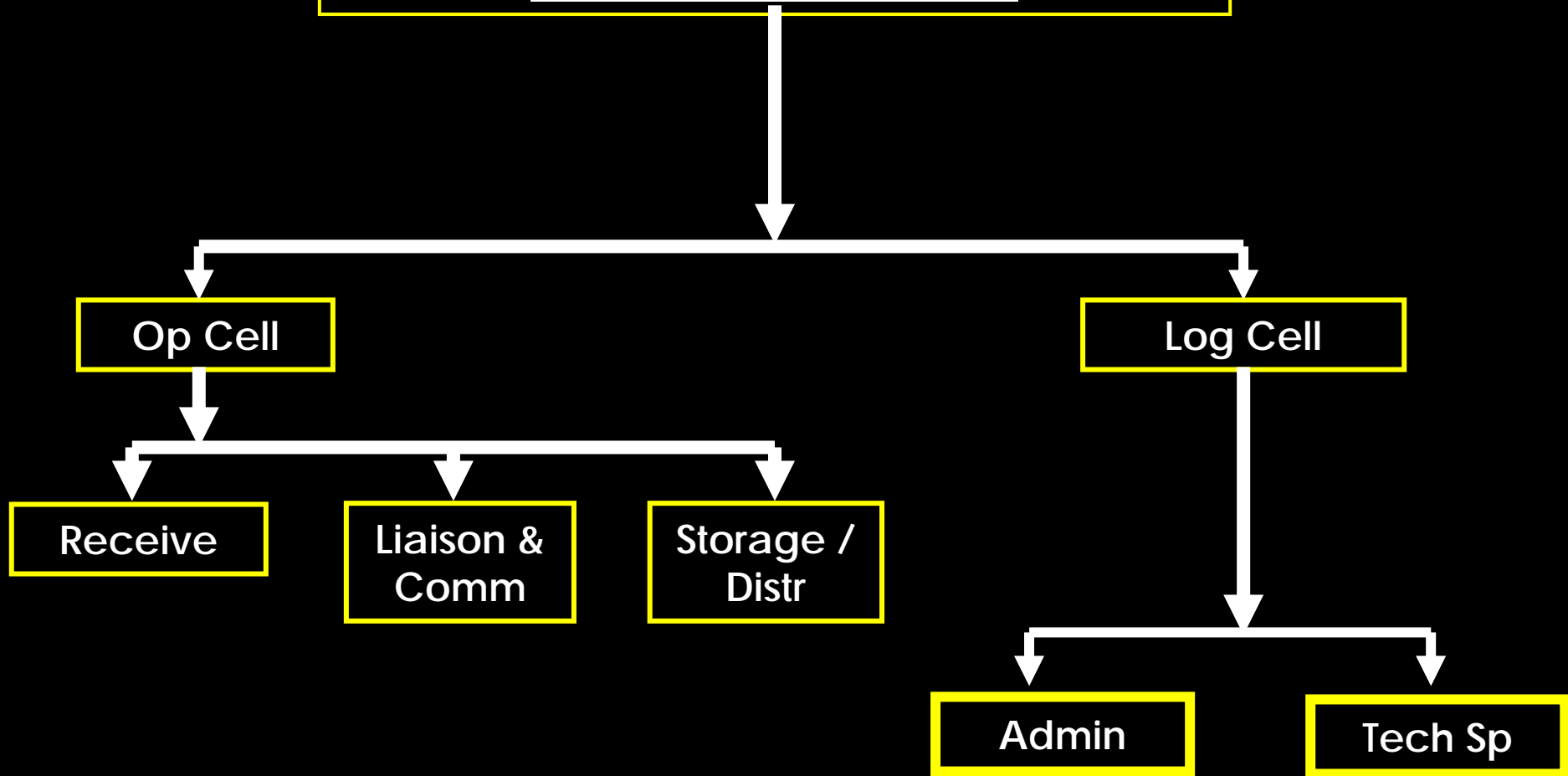
- ❑ **CYCLONE SHELTERS**
- ❑ EMBANKMENT
- ❑ **MASSIVE PLANTATION**
- ❑ HOUSE BLDG ASST BEFITTING TO COASTAL AREAS
- ❑ **REHABILITATION OF LIVELIHOODS**
- ❑ CONSTRUCTION OF HARBOUR/JETTY FOR BOATS/
TRAWLERS /CATTLES/ DOMESTIC ANIMALS
- ❑ **RECONSTRUCTION OF DAMAGED ROADS**

OBJECTIVES

- * **COORD DEPLOYMENT OF RESOURCES**
- * **AVOID OVERLAPPING/DUPLICATION OF EFFORTS**
- * **COORD VOLUNTEER EFFORTS**
- **MAINTAIN INFO (INCL HELIPADS)**
- * **LIAISON AND COMM WITH AGENCIES**
- * **ENSURE ALLOCATION AND DISTRIBUTION OF RELIEF MATERIAL AS PER PRIORITY**



COORD CEN



COUNTRY WIDE DAMAGE ASSESSMENT

SER	ITEM	DAMAGE
1	AFFECTED DIST	30
2	BADLY AFFECTED DIST	9
3	AFFECTED UZ	200
4	AFFECTED UNIONS	1871
5	AFFECTED FAMILIES	19,28,265
6	AFFECTED PEOPLE	85,45,456
7	DEATH (CONFIRMED)	3274
8	MISSING	1726
9	LIVE STOCKS	46,1,750
10	WATE CRAFT CAPSIZED/MISSING	137

CONT...

COUNTRY WIDE DAMAGE ASSESSMENT

SER	ITEM	DAMAGE	
		COMPLETELY	PARTIALLY
11	DWELLING	3,63,346	8,15,628
12	CROP	4,61,399 (ACRES)	1,22,5,304 (ACRES)
13	ROAD/TRACK	648 KM	88,549 KM
14	EDUCATIONAL INSTITUTE	1780	6480
15	BRIDGE/CULVERT	1654	875

SOURCE: Ministry of Disaster Management and Relief

TOTAL ESTIMATED LOSS: 16,000 CRORE TAKA

DONATION FROM HON'BLE CHIEF ADVISOR

	Districts	GR Rice	GR Cash	House Bldg	CI Sheet	Blanket
1	Shatkhira	375	2.00	3.05	500	500
2	Khulna	350	1.75	2.10	500	500
3	Bagerhat	1450	3.50	8.45	2000	3000
4	Barguna	1800	3.50	8.20	1500	3000
5	Patuakhali	1740	3.00	8.45	2000	2000
6	Pirojpur	1535	3.00	8.19	1500	2000
7	Jhalkathi	690	1.50	4.60	1000	1000
8	Bhola	350	2.00	3.10	500	1000
9	Barisal	1000	1.50	3.53	2000	1000
10	Madaripur	350	1.75	.60	500	500
11	Shariatpur	250	1.25	.60	500	500
12	Gopalganj	400	1.25	.60	500	-
	TOTAL	10290	26.00	51.47	13000	15000

Major Items Only

IMM REQR FOR NEXT ONE MONTH

Ser	Items	Barisal	Bhola	Borguna	Patuakhali	Pirojpur	Bagerhat
1	GR Rice (M Ton)	4100	-	870	2500	500	1,000
2	Dal (M Ton)	300	13	-	-	-	-
3	Tin (Bundle)	18,000	11,600	48,000	3000	30,000	1,50,000
4	Blanket	28,000	9,400	1,00,000	-	50,000	71,000
5	Lungi	45,000	10,000	25,000	-	-	75,000
6	Shari	45,000	11,000	50,000	-	-	75,000
7	Winter pullover	-	10,200	1,00,000	-	2,00,000	-
8	Baby Clothing	-	-	-	-	-	1,25,000
9	Lime (M Ton)	-	-	-	-	-	-

IMM REQR FOR NEXT ONE MONTH

Ser	Items	Total
1	GR Rice (M Ton)	10,500 (Arranged)
2	Dal (M Ton)	500
3	Tin (Bundle)	2,65,000
4	Blanket	3,50,000
5	Lungi	1,60,000
6	Shari	1,90,000
7	Winter Pullover	3,50,000
8	Baby Clothing	2,25,000
9	Lime (M Ton)	60

RECEIVED - DISTR

Ser	Item	Load (Ton)	Distr (Ton)
1	Rice	125.27	All
2	Dates	69.28	All
3	Dry Food	112.49	All
4	Utensils	18.72	All
5	Saline/Water	48.00	All
6	Clothing	39.71	All
Total		413.47	All

AS ON 01 DEC

BY AIR

Ser	Date	No of Sorties		Hel	Relief Received (Ton)
		AN-32	C-130		
Total		18	26	174	701 tons -339 tons handled by us

BY ROAD

Total	363 Tons - 148 tons directly handled from here
--------------	---

Total 487 tons

RELIEF ENROUTE

Ser	Name	From	Total Load (Ton)	Destination
1	LCT AMIR HAMZA	Dhaka	250	Patuakhali, Borguna
2	LCU	Dhaka	100	Pirozpur, Bagerhat
3	Light ship	CTG	300	Patuakhali, Pirozpur, jhalokathi
4	LCT Birshresto Jahangir	Dhaka	200	Barisal
Total			850	

DEPLOYMENT OF MEDICAL TEAMS

Civil Admin - 441

Ser	District	No of Medical Teams	Rmk
1	Barishal	121	
2	Patuakhali	101	
3	Bhola	66	
4	Pirojpur	62	
5	Barguna	54	
6	Jhalkathi	37	
Total		441	

DEPLOYMENT OF MEDICAL TEAMS

➤ Army - 13

PIROJPUR – 3

PATUAKHALI -4

BAGERHAT -4

JHALOKATHI -2

One Fd Med Hosp at Morolganj

WATER TREATMENT PLANT

➤ RECEIVED - 08 (From Army)

➤ DISTR

01X KALAPARA (PATUAKHALI)

01XMIRZAGANJ (PATUAKHALI)

01XGOLACHIPA (PATUAKHALI)

01XSADAR (PATUAKHALI)

01X MOTHBARIA (PIROJPUR)

01XPATHARGHATA (BARGUNA)

01XKATHALIA (JHALAKHATHI)

01XSHARONKHOLA (BAGERHAT)

RELIEF GOODS FROM INDIA

Ser	Items	Total
1	Tent	300
2	Blanket	14000
3	Medicine	114 Cartoons
4	Water Filter	5000

PAKISTAN MED TEAM

✓ 1ST PARTY ARR- 23 NOV(50XPERS)

✓ OP FROM BHANDARIA

✓ 30 BED HOSP CAP

✓ 2ND PARTY ARR- 24 NOV(24XPERS)

- TOTAL – 74 Personnel
- Can treat 300 patients per day all types incl cardiac patients

US MEDICAL TEAM

✓ ADV PARTY ARR- 23 NOV

✓ MED TEAM AT PATUAKHALI -250 bed hosp

US HEL SP INCL WATER SUPPLY

- ✓ 2 X CH 53 (SEA STALLION)
 - ✓ 5 missions per day
 - ✓ 170,000 lbs per day
- ✓ 4 X CH 46 (SEA NIGHT)
 - ✓ 5 X missions per day
 - ✓ 60,000 lbs per day
- ✓ Produce 60,000 gals/day and distr 15,200 gals/day

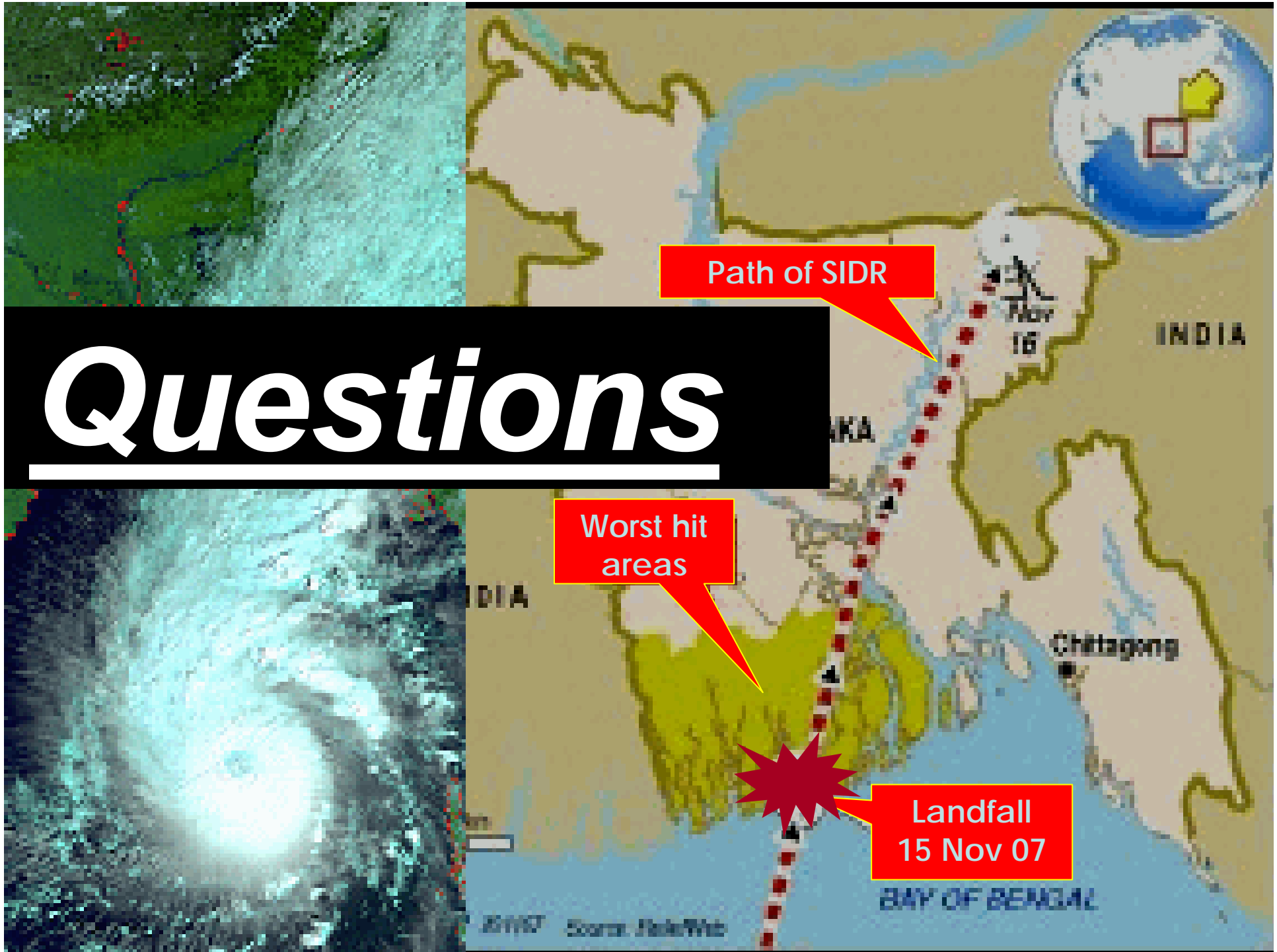


USS KEARSARGE

ACTIVITIES OF OTHER SOURCES / AGENCIES

- ✓ UNDP
- ✓ UNICEF
- ✓ WFP
- ✓ ICRC
- ✓ CARE
- ✓ OXFAM
- ✓ WORLD VISION
- ✓ SAVE THE CHILDREN
- ✓ BRAC
- ✓ PKSF
- ✓ GRAMEEN BANK
- ✓ BGMEA
- ✓ LOCAL AGENCIES
- ✓ INDIVIDUAL ASST

Questions



STATE OF DEAD/MISSING (As on 01 Dec 07)

DIST	DEAD	MISSING
BARISHAL	95	-
JHALOKATHI	47	-
PIROJPUR	382	519
BORGUNA	1270	27
BHOLA	42	14
PATUAKHALI	451	221
KHULNA	18	-
SHATKHIRA	19	1
BAGHERHAT	763	-
GOPALGONJ	35	-
Total :	3122	782

RELIEF GOODS FROM JAPAN

Ser	Items	Total
1	Tent	100
2	Blanket	1100
3	Generator	30
4	Water Purifier	30

RELIEF GOODS FROM PAKISTAN

Ser	Items	Total
1	Tent	300
2	Rice	2 MT
3	Milk	350 pkt
4	Medicine	168 pkt