

Cyclone Sidr: RAPID EDUCATION ASSESSMENT (REA) REPORT

EDUCATION COORDINATION GROUP (ECG)

3 January 2008

Assessment led by: Save the Children

I. Background

The super-cyclone Sidr hit the southern part of Bangladesh on November 15, 2007 affecting 5.4 million people directly including the death of 3,295 people across 30 districts¹. Although the death toll mismatched with the might of the cyclone and also with past trends of natural disasters which induced high numbers of deaths in the country, the cyclone's short, medium and long term affects on people's lives, including the children's, have been devastating. The general affects of the cyclone on the economy of the entire country is also going to be significant.

The Government and communities, with the direct support of numerous local, national and international organizations were notably successful in relocating people to shelters during the cyclone. But the combination of wind and water power destroyed almost everything of the cyclone survivors. The people, who were already living in poverty, lost their minimum ability to meet all five of their basic needs. Agriculture and fishing, two of the main sources of livelihoods in this coastal belt, were also significantly affected. One of the most severe affects of the cyclone is undoubtedly on the education of the children. In addition to the emotional strain of disrupted routines and normalcy, Sidr destroyed educational infrastructure and swept away children's books and school supplies making it difficult for them to resume educational activities even when facilities reopen. The Government of Bangladesh estimates that 2,240 educational institutions were totally destroyed and an additional 11,490 were partially damaged in 22 districts as a result of the cyclone. As a result the GOB postponed secondary exams and gave district level officials the authority to determine when primary schools should resume operations.

Although, through the government and other sources, some data is already available about the extend of the damage to the education sector, more detail information especially about all types of education institutions and further analysis has been required in order to reach a relatively comprehensive understanding on the full extent of the Sidr-caused education-related damages across the whole sector including non-government education institutions. Keeping this in mind, the Education Cluster group decided to conduct a 'Rapid Education Assessment' in the nine most affected districts as identified by the United Nations. Considering its strong and early presence in the affected districts, Save the Children, a member of this group, was requested by the Cluster to conduct the assessment.

This report outlines the findings from the assessment. It is expected that the findings will inform agencies in deciding their strategies to deal with the education-related interventions.

1. Bangladesh Super Cyclone "SIDR" 2007, Ministry of Food and Disaster Management, Government of Bangladesh, 5 December 2007

Without proper information and analysis to inform recovery strategies, millions of children will be victimized by losing their rights to education in the Sidr-affected localities.

2. Objective of the Rapid Education Assessment (REA)

The key objective of this ‘Rapid Education Assessment’ is to present a comprehensive overview of the overall affects of Cyclone Sidr on the education sector (pre-primary, primary and secondary institutions within the government and non-government sub-sectors) in the nine most affected districts.

The specific objectives of the ‘REA’ were:

- i) to evaluate the infra-structural damages of various education institutions operated by various providers in the most-affected 9 districts
- ii) to assess the loss of teaching learning materials, furniture
- iii) to review the overall conditions of children and teachers in the affected areas
- iv) to examine the initiatives of school repairing and maintenance

3. Methodology

3.1 Geographical Coverage

The assessment was conducted in 498 union parishads of 62 upazilas in the 9 most-affected districts in Barisal and Khulna divisions. The detailed overview of the number of upazilas and union parishad per specific district is given in the table below.

Table I: Assessment Coverage			
Divisions	Districts	Upazilas	Union Parishad
Barisal	Barguna	5	41
	Barisal	9	80
	Bhola	7	63
	Jhalokati	4	35
	Patuakhali	7	71
	Pirojpur	7	53
Khulna	Bagerhat	9	76
	Khulna	10	49
	Satkhira	4	30
Total	9	62	498

3.2 Assessment Tool

The assessment tool used was tailored from the UNICEF’s standard format through a detail analysis among the local education cluster members. The data was collected on four areas, which are:

- a. School data
- b. Children data
- c. Teacher data
- d. WATSAN data

Through using the tool, data was collected on current infrastructural damage, loss of teaching-learning materials, supplies and furniture, school operation status, student and teachers' status, water and sanitation situation of pre-schools, primary schools, high schools including madrassas of both government and NGO/private sectors.

3.3. Data administration

On behalf of the Education Cluster in Emergencies, Save the Children (SC) led the Rapid Education Assessment. In total 18 NGOs² supported SC in collecting data among which 10 are SC's direct partner NGOs, 6 are involved as network members, and 2 NGOs worked upon receiving request from SC and UNICEF.

After necessary preparation and communication, the actual data collection process started on December 2, 2007, and continued for about four weeks with a few breaks due to issues such as multiple holidays (Eid and Christmas), staff shortage of partner organizations, difficulty in coordination, and travel difficulties.

The data were collected from primarily from the respective upazilla primary and secondary education offices, union councils, NGO offices and local key informants. The staff members of the PNGOs collected the information and sent them to SC through courier service, e-mail, fax and in few cases over the telephone. In according to a suggestion made by SC, the organizations avoided the unions where Sidr did not affect.

3.4. Data Processing and Analyzing

Data collected data has been entered into the computer using a user friendly database system developed using Visual FoxPro for this purpose. After entering data, the data were checked and edited using computer database programming. Later on, the edited data was analyzed using SPSS and Visual FoxPro as well.

3.5. Verification

To check authenticity of the collected data, SC initially planned to verify the data from 20 percent of all unions surveyed. But due to various reasons such as vacations, staff shortage, and time constraint, only the data from 10 percent of surveyed unions was verified. SC's staff members with special orientation did the verification. The average deviation from the data collected from partner NGOs was approximately 17 percent.

3.5 Major Challenges

The major challenges in the REA were:

- Delays in receiving data from the field as some organisations delayed collecting and sending the data. This gave less time for data analysis and report preparation;
- The data collection instrument was shared only through e-mail i.e. no orientation was given, which created confusions in few cases;
- At the field level, data were collected from multiple sources, which might have resulted the deviation as the validation process shows

² BDS, BRAC, CDBP, Coast Trust, CODEC, DMUS, DUS, GJUS, Jago Nari, JCF, JJS, Multi Trust, Shaplahul, Speed Trust, South Asia Partnership, SWO, Ushik, Uttaran

- Few agencies brought changes to the original questionnaire resulting difficulties especially during the data entry stage
- Staff members of a number of agencies had to accommodate this assessment to their regular activities, which posed a challenge in coordinating the task.
- Data collection from the most affected districts was logistically difficult
- Due to Eid and Christmas holidays it was difficult to engage people as well as to find informants

4. Findings

4.1 Children

In the surveyed areas, 1,535,548 school-going or registered children (797,937 girls) were affected by the cyclone. This includes children in pre-primary, primary and secondary education institutions in the government, non-government and madrassas systems.

When the assessment was conducted, 91 percent of children registered were going to school at all three levels of education. Of children registered in a primary institution, 99 percent had returned to classes at the time of this survey. These children either returned to their normal schools or temporary schools. In some communities, classes were being held in tents and under trees.

The identification of all children, in and out of school, affected by the cyclone was outside the scope of this assessment. As a result, this assessment does not include out-of-school children.

4.2 Extent of damage to education institutions

In the districts surveyed under this assessment, 72 percent of education institutions were damaged in total. Of this total, 13 percent were completely destroyed and 60 percent were partially and minor damaged.

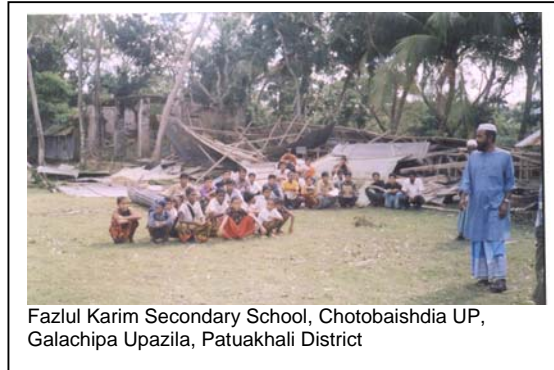
Overall, the highest number of damaged education institutions was in the five hardest hit districts of Patuakhali, Barguna, Pirojpur, Jhalokati and Barisal.

District	Number of education institutions	Percentage damaged		
		Totally	Partially	Minor
Patuakhali	378	19.5%	52.4%	8.4%
Barguna	1,567	19.9%	43.4%	24.8%
Pirojpur	1,240	12.7%	64.3%	7.5%
Jhalokati	1,007	26.6%	38.7%	11.4%
Barisal	3,917	8.1%	40.1%	18.1%

The districts least affected in terms of education were Khulna and Satkhira.



Saikat Gucchogram RNGPS, Patharghata Upazila, Barguna District



Fazlul Karim Secondary School, Chotobaishdia UP, Galachipa Upazila, Patuakhali District

Pre-primary institutions

The majority of pre-primary level institutions are operated by NGOs or privately (88.5 percent) with the remaining pre-primaries attached to madrassas. Of the total number of pre-primaries (1,366), 52 percent were damaged by the cyclone – of these 19 percent were totally destroyed and 33.5 percent were partially or had minor damaged.

Primary institutions

In the target districts, 73.5 percent of primary education institutions were affected by the cyclone though the percentage was much higher in some districts, such as Barguna, Patuakhali and Pirojpur with more than 80 percent of primary institutions affected.

For government primary schools, 9.6 percent were destroyed, whereas a number percent of madrassas (16.9 percent) and NGO institutions (14.9 percent) were destroyed. Saikat Gucchuogram RNGPS, pictured above, is located close to the shore line and was destroyed by a water surge.

A much higher number of government schools were partially and had minor damaged approximately 68.4 percent. This was twice as many madrassas (35.1 percent) and NGO (29.7 percent) primary institutions.

Secondary institutions

On average, a higher percentage of secondary education institutions were destroyed than other institutions, 17.3 percent. Overall 80 percent of secondary education institutions were affected in the target districts of the assessment.

4.3 School opened or closed

At the time of the assessment, 78 percent of pre-primary, 83 percent of primary and 67 percent of secondary education institutions were functions to some degree. This could mean that the school was operating in the regular classroom, in a tent or under a tree.



Children in a tent classroom after their school had been destroyed.
Saikat Guchoqram RNGPS, Patharghata
Upazila, Barguna District

4.4 Loss of furniture and teaching-learning materials

The majority of education institutions experienced a great loss of furniture and teaching – learning materials. All institutions that were completely destroyed lost all their furniture and materials. Children also lost textbooks, notebooks, pens/pencils, etc when their homes were destroyed.

Of the 1,366 pre-primary institutions, they lost 188 teachers' desks, 473 students' desks, 405 chairs, 1,402 student benches, and 352 blackboards

Of the 6,929 primary institutions affected, they lost 4,508 teachers' desks, 2,621 students' desks, 9,142 chairs, 30,780 student benches, and 4,275 blackboards.

Of the 2,861 secondary institutions affected, they lost 3,602 teachers' desks, 3,206 students' desks, 9,373 chairs, 28,689 student benches, and 4,393 blackboards.

4.5 Extent of damage to water and sanitation facilities

Along with the destruction to the instructional buildings, education institutions had damages to their water and sanitation facilities. The majority of education institutions which had water and sanitation facilities lost use of them totally or partially as a result of the cyclone. As classrooms are repaired and/or reconstructed, water and sanitation facilities need to be included.

The number of water and sanitation facilities lost at each level of education:

Category of education institutions		Water & Sanitation facilities destroyed			
		Water	Latrine	Others	Total
Pre-Primary School	Government	82	0	0	0
	Madrassa	11	24	0	598
	NGO/Private	67	133	0	804
Primary	Government	765	1,264	3	27,285
	Madrassa	40	122	0	2,997
	NGO/Private	32	76	0	498
Secondary	Government	96	126	0	2,990
	Madrassa	79	206	0	8,910
	NGO/Private	254	434	25	16,789
Total		1,426	2,384	28	60,871

4.6 Teachers affected

The assessment showed that 40,020 teachers were affected by the cyclone.

Category of School	Number of teachers affected		
	Male	Female	Total
Pre-Primary	727	1,203	1,930
Primary	9,422	7,583	17,005
High School	11,993	3,534	15,527
Madrassa	4,906	653	5,558
Total	27,047	12,973	40,020

At the primary level, 93 percent are teachers trained and available, whereas 69 percent of secondary teachers are trained and available. Fewer teachers at the pre-primary level and at madrassas are trained and available, 48 percent and 34 percent respectively.

4.7 School Examination

The primary school examinations for all grades were completed in almost all upazilas in the 9 most affected districts. In two of the districts, Patuakhali and Bagerhat, the examination of grade V will take place in early January 2008 at pre-selected centers in the same like the other public examinations. The annual examination of grade V will take place in Patuakhali and Bagerhat during 1-3 January and 8-10 January, 2008 respectively. The Scholarship examination of the selected students of grade V will take place from 14 to 15 January 2008. The Government has done well in completing the examinations of primary school more or less within the schedule. The results of the examinations will come out by 15 January 2008. In addition, the government has postponed the Secondary School Certificate examination for one month.

4.8 School Repairing Grant

Recently the government has allocated USD 6.62 million from its revenue budget for minor repairs of primary schools affected by Sidr. This school repair grant is sanctioned for only GPS, RNGPS and government operated community schools. Private/NGO schools will not get this support.

During the verification of this assessment, it has been noticed that about 15 schools have already received the grant. At the time of the assessment, divisional and district education officers confirmed that about 25 percent of the affected schools have already received this grant. Approximately 10 percent of schools started repair work before getting any financial support or commitment from any source. About 30 percent of the repair work was already completed during the verification. Repair work is planned to be completed for government primary schools (GPS, RNGPS, community schools) by 15 January 2008.

5. Programmatic Recommendations

Recommendations for priorities and interventions to address the damaged identified so that all children at all levels are back in learning in January and will have a quality space for learning in the short term and long term are:

1. Teaching and learning materials for affected children
2. Transitional schools – at pre-primary, primary and secondary levels where institutions have been destroyed.
3. Rehabilitation of partially damaged madrassa, NGO, and secondary education institutions.
4. Reconstruction of GPS, RNGPS, community schools, madrassas, NGO schools and secondary schools destroyed
5. Training for teachers on psycho-social affects of the cyclone on children and how to make learning more child-friendly.
6. Development of Education Sector Disaster Risk Reduction and Preparedness plan based on a whole sector approach

Data by District (adjusted)

Number of School

District	Pre-Primary School			Primary			Secondary			Total
	Government	Madrasa	NGO/Private	Government	Madrasa	NGO/Private	Government	Madrasa	NGO/Private	
Bagerhat	0	1	138	10	238	111	7	6	205	715
Patuakhali	0	0	64	232	8	5	1	24	44	378
Barguna	0	19	146	982	65	11	2	114	227	1,567
Pirojpur	0	1	55	697	31	13	4	181	258	1,240
Jhalokathi	0	27	35	587	36	51	15	107	149	1,007
Barisal	0	61	606	2,048	133	180	5	200	685	3,917
Bhola	0	40	113	674	67	119	29	214	75	1,330
Khulna	0	0	29	103	5	41	8	9	75	270
Shatkhira	0	0	30	469	9	6	3	71	142	730
Total	0	150	1,216	6,029	364	536	74	926	1,860	11,155

Number of completely damaged

District	Pre-Primary School			Primary			Secondary			Total
	Government	Madrasa	NGO/Private	Government	Madrasa	NGO/Private	Government	Madrasa	NGO/Private	
Bagerhat	0	0	48	19	0	8	3	2	34	114
Patuakhali	0	0	29	17	2	2	1	11	11	74
Barguna	0	3	43	138	30	0	1	38	60	312
Pirojpur	0	0	21	63	0	2	0	38	34	157
Jhalokathi	0	5	13	135	11	21	6	40	38	268
Barisal	0	0	71	116	11	35	1	19	62	316
Bhola	0	6	4	34	5	5	10	25	8	96
Khulna	0	0	5	11	0	5	0	2	8	31
Shatkhira	0	0	2	0	0	0	0	0	3	5
Total	0	14	235	533	59	78	21	174	258	1,373

Number of partially damaged

District	Pre-Primary School			Primary			Secondary			Total
	Government	Madrasa	NGO/Private	Government	Madrasa	NGO/Private	Government	Madrasa	NGO/Private	
Bagerhat	0	0	33	125	1	20	2	5	130	316
Patuakhali	0	0	6	155	4	1	0	8	25	198
Barguna	0	5	51	480	9	0	1	40	93	680
Pirojpur	0	1	21	454	5	8	1	118	189	798
Jhalokathi	0	5	4	257	7	13	12	40	52	389
Barisal	0	12	126	938	24	48	4	89	329	1,569
Bhola	0	14	28	202	26	12	26	104	37	448
Khulna	0	0	4	37	2	8	1	0	43	95
Shatkhira	0	0	6	15	0	2	0	13	21	57
Total	0	37	279	2,663	78	113	47	417	918	4,551

Number of minor damaged

District	Pre-Primary School			Primary			Secondary			Total
	Government	Madrasa	NGO/Private	Government	Madrasa	NGO/Private	Government	Madrasa	NGO/Private	
Bagerhat	0	0	17	86	0	12	1	0	13	129
Patuakhali	0	0	0	28	2	0	0	0	2	32
Barguna	0	4	25	282	4	0	1	16	58	389
Pirojpur	0	0	3	73	3	1	1	6	7	93
Jhalokathi	0	0	1	85	6	0	4	5	15	114
Barisal	0	0	70	470	17	27	0	33	93	710
Bhola	0	2	11	97	17	3	8	35	6	179
Khulna	0	0	6	34	0	17	2	2	16	77
Shatkhira	0	0	2	12	0	1	0	7	11	33
Total	0	6	134	1,167	47	61	17	104	220	1,755

Number of school closed

District	Pre-Primary School			Primary			Secondary			Total
	Government	Madrasa	NGO/Private	Government	Madrasa	NGO/Private	Government	Madrasa	NGO/Private	
Bagerhat	0	0	9	8	0	0	3	0	21	41
Patuakhali	0	0	0	3	0	0	0	0	0	3
Barguna	0	3	0	24	3	0	0	7	27	64
Pirojpur	0	0	0	4	0	0	0	1	0	5
Jhalokathi	0	4	16	81	9	3	5	43	23	184
Barisal	0	0	31	54	7	7	0	14	10	123
Bhola	0	2	3	0	7	0	4	19	5	40
Khulna	0	0	0	0	0	0	0	0	1	1
Shatkhira	0	0	0	0	0	0	0	0	0	0
Total	0	9	59	174	26	10	12	84	87	461

Number of open (still functioning)

District	Pre-Primary School			Primary			Secondary			Total
	Government	Madrasa	NGO/Private	Government	Madrasa	NGO/Private	Government	Madrasa	NGO/Private	
Bagerhat	0	0	125	203	1	96	5	3	193	627
Patuakhali	0	0	71	224	8	5	0	25	42	376
Barguna	0	12	161	1,015	41	4	1	107	198	1,539
Pirojpur	0	0	0	194	0	8	1	16	63	282
Jhalokathi	0	16	9	508	22	49	15	65	121	805
Barisal	0	20	454	1,691	100	156	1	154	445	3,021
Bhola	0	36	111	733	61	132	30	176	54	1,332
Khulna	0	0	29	103	5	41	8	9	75	270
Shatkhira	0	0	30	469	9	6	3	71	142	730
Total	0	83	991	5,141	248	497	65	625	1,334	8,983

Number of teaching and learning materials, furniture etc damaged: TEACHERS DESK

District	Pre-Primary School			Primary			Secondary			Total
	Government	Madrasha	NGO/Private	Government	Madrasha	NGO/Private	Government	Madrasha	NGO/Private	
Bagerhat	0	0	15	122	0	39	186	0	244	606
Patuakhali	0	0	0	218	10	0	0	63	82	374
Barguna	0	21	0	1,376	100	5	51	384	480	2,416
Pirojpur	0	0	13	368	1	1	32	109	258	781
Jhalokathi	0	9	11	347	32	21	126	200	63	809
Barisal	0	2	49	1,318	88	50	44	121	686	2,357
Bhola	0	46	19	286	72	10	119	231	64	848
Khulna	0	0	2	42	0	0	16	14	27	101
Shatkhira	0	0	0	4	0	0	0	2	0	6
Total	0	78	109	4,081	303	125	575	1,124	1,903	8,298

Number of teaching and learning materials, furniture etc damaged: STUDENT DESK

District	Pre-Primary School			Primary			Secondary			Total
	Government	Madrasha	NGO/Private	Government	Madrasha	NGO/Private	Government	Madrasha	NGO/Private	
Bagerhat	0	0	1	57	0	178	1,021	0	163	1,419
Patuakhali	0	0	0	35	0	0	0	0	6	41
Barguna	0	6	0	53	3	0	6	20	32	121
Pirojpur	0	48	297	124	0	0	97	2	166	734
Jhalokathi	0	29	11	1,119	138	19	195	428	167	2,104
Barisal	0	2	53	637	45	41	0	90	362	1,229
Bhola	0	0	25	151	10	0	53	203	176	618
Khulna	0	0	2	12	0	0	0	5	14	33
Shatkhira	0	0	0	0	0	0	0	2	0	2
Total	0	85	388	2,188	195	238	1,371	750	1,085	6,300

Number of teaching and learning materials, furniture etc damaged: CHAIR

District	Pre-Primary School			Primary			Secondary			Total
	Government	Madrasha	NGO/Private	Government	Madrasha	NGO/Private	Government	Madrasha	NGO/Private	
Bagerhat	0	0	40	277	0	118	496	0	726	1,656
Patuakhali	0	0	0	339	15	0	0	86	158	597
Barguna	0	30	0	1,934	171	12	75	609	769	3,599
Pirojpur	0	0	21	774	0	0	63	242	695	1,794
Jhalokathi	0	19	3	835	66	27	195	303	250	1,699
Barisal	0	7	158	3,113	372	95	82	789	2,588	7,203
Bhola	0	82	33	793	119	23	534	405	198	2,187
Khulna	0	0	12	42	3	12	6	12	92	179
Shatkhira	0	0	0	4	0	0	0	1	0	5
Total	0	139	266	8,111	745	286	1,451	2,447	5,475	18,920

Number of teaching and learning materials, furniture etc damaged: Bench

District	Pre-Primary School			Primary			Secondary			Total
	Government	Madrasha	NGO/Private	Government	Madrasha	NGO/Private	Government	Madrasha	NGO/Private	
Bagerhat	0	0	73	859	0	54	0	0	2,268	3,254
Patuakhali	0	0	0	1,880	56	0	0	877	1,032	3,845
Barguna	0	152	0	8,147	745	26	252	3,387	3,423	16,132
Pirojpur	0	0	0	3,182	0	0	67	1,028	2,636	6,912
Jhalokathi	0	46	17	2,122	218	51	308	644	434	3,840
Barisal	0	74	641	8,522	1,426	216	237	1,320	6,111	18,547
Bhola	0	302	73	2,368	497	101	2,104	1,580	576	7,601
Khulna	0	23	0	204	56	50	22	72	309	736
Shatkhira	0	0	0	0	0	0	0	3	1	4
Total	0	598	804	27,285	2,997	498	2,990	8,910	16,789	60,871

Number of teaching and learning materials, furniture etc damaged: Black board

District	Pre-Primary School			Primary			Secondary			Total
	Government	Madrasha	NGO/Private	Government	Madrasha	NGO/Private	Government	Madrasha	NGO/Private	
Bagerhat	0	0	40	151	0	63	236	0	336	825
Patuakhali	0	0	41	240	7	0	0	113	147	548
Barguna	0	14	0	800	108	5	43	384	410	1,764
Pirojpur	0	0	28	428	0	0	59	194	363	1,072
Jhalokathi	0	19	37	489	34	29	149	207	75	1,038
Barisal	0	5	101	1,294	105	62	36	200	788	2,592
Bhola	0	45	19	323	88	19	286	246	62	1,088
Khulna	0	3	0	26	2	2	10	20	29	92
Shatkhira	0	0	0	0	0	0	0	1	0	1
Total	0	87	265	3,751	344	181	818	1,364	2,211	9,020

Number of teaching and learning materials, furniture etc damaged: Others

District	Pre-Primary School			Primary			Secondary			Total	
	Government	Madrasha	NGO/Private	Government	Madrasha	NGO/Private	Government	Madrasha	NGO/Private		
Bagerhat	0	0	1	7	0	3	0	0	0	51	62
Patuakhali	0	0	11	1,830	220	0	0	770	0	1,102	3,933
Barguna	0	0	0	49	0	0	59	0	0	9	116
Pirojpur	0	0	0	1	0	0	0	0	0	4	4
Jhalokathi	0	0	0	0	0	0	0	0	0	0	0
Barisal	0	1	4	6	1	0	0	0	0	8	20
Bhola	0	0	0	5	0	0	2	13	0	0	20
Khulna	0	0	0	0	0	0	0	0	0	2	2
Shatkhira	0	0	2	0	0	0	0	0	0	0	2
Total	0	1	17	1,897	221	3	61	783	1,173	4,156	

Number of children in the affected school

District	Pre-Primary		Primary		High School		Madrasha		Total
	Boy	Girl	Boy	Girl	Boy	Girl	Boy	Girl	
Bagerhat	1,949	1,749	19,518	19,861	38,883	40,649	0	0	122,610
Patuakhali	612	609	20,969	21,709	5,887	7,443	4,847	2,570	64,647
Barguna	692	745	61,260	64,463	42,946	39,459	11,825	8,915	230,305
Pirojpur	413	696	40,432	42,698	25,961	30,735	11,642	4,821	157,397
Jhalokathi	1,123	1,004	30,218	30,025	27,975	25,075	3,726	1,657	120,801
Barisal	14,720	14,930	185,349	183,624	111,831	112,909	20,109	18,683	662,155
Bhola	6,054	8,518	34,076	36,240	31,354	28,665	14,506	18,221	177,633
Khulna	226	211	11,572	10,320	12,235	10,271	1,691	1,440	47,966
Shatkhira	322	326	2,639	2,601	3,355	3,644	2,690	2,452	18,029
Total	26,111	28,787	406,032	411,541	300,427	298,850	66,654	58,759	1,597,162

Number of children out of school because of disaster

District	4 - 5 years		6 - 10 years		11 - 18 years		Total
	Boy	Girl	Boy	Girl	Boy	Girl	
Bagerhat	473	420	10,864	8,564	3,696	5,248	29,264
Patuakhali	346	366	1,842	1,827	377	461	5,218
Barguna	452	463	12,026	12,938	5,466	5,908	37,253
Pirojpur	399	734	779	1,133	2,401	2,307	7,754
Jhalokathi	10,201	8,992	6,164	5,753	9,525	8,856	49,493
Barisal	10,936	11,696	14,479	14,132	8,710	9,109	69,061
Bhola	619	1,250	16,746	16,201	14,911	13,665	63,392
Khulna	14	25	404	428	464	391	1,726
Shatkhira	0	0	0	0	0	0	0
Total	23,440	23,947	63,304	60,975	45,550	45,945	263,163

Number of children still going to school

District	Pre-Primary		Primary		High School		Madrasha		Total
	Boy	Girl	Boy	Girl	Boy	Girl	Boy	Girl	
Bagerhat	1,566	1,394	33,237	34,171	28,420	30,262	0	0	129,050
Patuakhali	393	393	19,678	18,463	5,159	6,485	4,545	2,408	57,525
Barguna	1,145	1,361	23,102	23,212	15,038	14,320	6,093	3,718	87,989
Pirojpur	0	0	38,025	38,850	23,013	26,491	9,153	3,534	139,066
Jhalokathi	1,473	1,586	50,395	50,134	19,723	29,700	2,327	1,128	156,465
Barisal	4,753	4,851	181,274	178,837	102,008	97,127	24,942	21,370	615,162
Bhola	11,286	12,571	47,402	51,207	29,534	23,931	18,764	19,181	213,875
Khulna	226	211	8,262	7,345	10,744	8,829	223	110	35,950
Shatkhira	310	305	2,639	2,336	3,163	3,463	2,690	2,992	17,283
Total	21,152	22,672	404,014	404,555	236,801	240,607	68,737	54,440	1,452,980

Number of teachers in the affected school

District	Pre-Primary		Primary		High School		Madrasha		Total
	Male	Female	Male	Female	Male	Female	Male	Female	
Bagerhat	23	31	227	220	834	212	106	44	1,697
Patuakhali	0	65	449	366	352	56	330	92	1,710
Barguna	0	71	1,589	1,483	2,078	658	805	79	6,763
Pirojpur	0	20	689	556	805	264	350	5	2,689
Jhalokathi	42	46	721	866	786	365	176	58	3,060
Barisal	469	720	4,324	3,395	4,487	1,309	1,936	287	16,926
Bhola	173	229	983	382	1,762	318	1,006	50	4,902
Khulna	20	13	384	263	659	316	56	21	1,732
Shatkhira	0	8	57	53	230	36	141	16	541
Total	727	1,203	9,422	7,583	11,993	3,534	4,906	653	40,020

Number of trained teachers available

District	Pre-Primary		Primary		High School		Madrasha		Total
	Male	Female	Male	Female	Male	Female	Male	Female	
Bagerhat	28	40	449	369	946	336	0	0	2,168
Patuakhali	0	68	330	255	186	25	24	0	888
Barguna	0	145	1,333	1,435	1,627	345	234	16	5,136
Pirojpur	0	3	1,522	1,692	936	712	384	139	5,388
Jhalokathi	0	0	388	651	446	209	21	13	1,729
Barisal	23	219	3,142	2,497	2,393	706	465	74	9,519
Bhola	140	218	799	315	886	178	431	29	2,995
Khulna	20	13	269	218	469	190	7	3	1,189
Shatkhira	0	8	57	52	144	21	30	1	313
Total	210	714	8,289	7,485	8,033	2,722	1,597	275	29,325

Number of water and sanitation facilities destroyed: WATER

District	Pre-Primary School			Primary			Secondary			Total
	Government	Madrasha	NGO/Private	Government	Madrasha	NGO/Private	Government	Madrasha	NGO/Private	
Bagerhat	1	0	10	85	0	11	37	9	41	195
Patuakhali	0	0	0	25	1	0	0	0	6	32
Barguna	0	2	0	207	26	0	3	4	57	298
Pirojpur	0	0	2	67	0	4	1	5	28	107
Jhalokathi	4	5	12	85	6	8	20	29	20	186
Barisal	16	4	35	240	4	1	3	13	73	389
Bhola	62	1	6	48	4	4	32	16	4	174
Khulna	0	0	3	8	0	5	1	3	26	46
Shatkhira	0	0	0	0	0	0	0	0	0	0
Total	82	11	67	765	40	32	96	79	254	1,426

Number of water and sanitation facilities destroyed: Latrine

District	Pre-Primary School			Primary			Secondary			Total
	Government	Madrasha	NGO/Private	Government	Madrasha	NGO/Private	Government	Madrasha	NGO/Private	
Bagerhat	0	0	12	87	0	18	33	8	68	224
Patuakhali	0	0	0	96	19	0	1	12	22	149
Barguna	0	3	0	303	47	0	3	50	89	495
Pirojpur	0	0	20	70	0	4	1	24	38	156
Jhalokathi	0	4	6	142	16	13	17	33	31	262
Barisal	0	4	43	407	20	16	6	28	151	675
Bhola	0	13	40	129	20	14	56	48	14	334
Khulna	0	0	13	20	0	13	9	3	21	79
Shatkhira	0	0	0	10	0	0	0	0	0	10
Total	0	24	133	1,264	122	76	126	206	434	2,384

Number of water and sanitation facilities destroyed: Others

District	Pre-Primary School			Primary			Secondary			Total
	Government	Madrasha	NGO/Private	Government	Madrasha	NGO/Private	Government	Madrasha	NGO/Private	
Bagerhat	0	0	0	0	0	0	0	0	0	0
Patuakhali	0	0	0	0	0	0	0	0	0	0
Barguna	0	0	0	3	0	0	0	0	24	27
Pirojpur	0	0	0	0	0	0	0	0	0	1
Jhalokathi	0	0	0	0	0	0	0	0	0	0
Barisal	0	0	0	0	0	0	0	0	0	0
Bhola	0	0	0	0	0	0	0	0	0	0
Khulna	0	0	0	0	0	0	0	0	0	0
Shatkhira	0	0	0	0	0	0	0	0	0	0
Total	0	0	0	3	0	0	0	0	25	28

Summary of Data by Category of School

Category of School		Total School	Damaged			
			Completely	Partially	Minor	Total
Pre-Primary School	Government	0	0	0	0	0
	Madrassa	150	14	37	6	56
	NGO/Private	1,216	235	279	134	648
Primary	Government	6,029	533	2,663	1,167	4,363
	Madrassa	364	59	78	47	184
	NGO/Private	536	78	113	61	251
Secondary	Government	74	21	47	17	85
	Madrassa	926	174	417	104	695
	NGO/Private	1,860	258	918	220	1,396
Total		11,155	1,373	4,551	1,755	7,679

Category of School		Total School	School Functioning		
			Closed	Open	Total
Pre-Primary School	Government	0	0	0	0
	Madrassa	150	9	83	92
	NGO/Private	1,216	59	991	1,050
Primary	Government	6,029	174	5,141	5,315
	Madrassa	364	26	248	274
	NGO/Private	536	10	497	507
Secondary	Government	74	12	65	77
	Madrassa	926	84	625	709
	NGO/Private	1,860	87	1,334	1,421
Total		11,155	461	8,983	9,444

Category of School		Total School	Teaching, Learning materials, Furniture etc. damage				
			Teacher's desk	Student desk	Chair	Bench	Black board
Pre-Primary School	Government	0	0	0	0	0	0
	Madrassa	150	78	85	139	598	87
	NGO/Private	1,216	109	388	266	804	265
Primary	Government	6,029	4,081	2,188	8,111	27,285	3,751
	Madrassa	364	303	195	745	2,997	344
	NGO/Private	536	125	238	286	498	181
Secondary	Government	74	575	1,371	1,451	2,990	818
	Madrassa	926	1,124	750	2,447	8,910	1,364
	NGO/Private	1,860	1,903	1,085	5,475	16,789	2,211
Total		11,155	8,298	6,300	18,920	60,871	9,020

Category of School	Student Affected		
	Boys	Girls	Total
Pre-Primary	26,111	28,787	54,898
Primary	406,032	411,541	817,573
High School	300,427	298,850	599,277
Madrassa	66,654	58,759	125,414
Total	799,224	797,937	1,597,162

Category of School	Children out of school because of disaster		
	Boys	Girls	Total
4-5 years	23,440	23,947	47,387
6-10 years	63,304	60,975	124,280
11-18 years	45,550	45,945	91,496
Total	132,295	130,867	263,163

Category of School		Total School	Number of water & Sanitation facilities destroyed			
			Water	Latrine	Others	Total
Pre-Primary School	Government	0	82	0	0	0
	Madrasha	150	11	24	0	598
	NGO/Private	1,216	67	133	0	804
Primary	Government	6,029	765	1,264	3	27,285
	Madrassa	364	40	122	0	2,997
	NGO/Private	536	32	76	0	498
Secondary	Government	74	96	126	0	2,990
	Madrassa	926	79	206	0	8,910
	NGO/Private	1,860	254	434	25	16,789
Total		11,155	1,426	2,384	28	60,871

Category of School	Children still going school		
	Boys	Girls	Total
Pre-Primary	21,152	22,672	43,825
Primary	404,014	404,555	808,569
High School	236,801	240,607	477,408
Madrassa	68,737	54,440	123,178
Total	730,704	722,276	1,452,980

Category of School	Number of teachers affected		
	Male	Female	Total
Pre-Primary	727	1,203	1,930
Primary	9,422	7,583	17,005
High School	11,993	3,534	15,527
Madrassa	4,906	653	5,558
Total	27,047	12,973	40,020

Category of School	Number of trained teachers available		
	Male	Female	Total
Pre-Primary	210	714	924
Primary	8,289	7,485	15,774
High School	8,033	2,722	10,755
Madrassa	1,597	275	1,872
Total	18,129	11,196	29,325

Primary - GPS/RNGPS/Community

Division	District	Upazilla	Teachers desk	Student's desk	Chair	Bench	Blackboard	Others	Data collecting agency
Barisal	Patuakhali	1	570	0	1196	1842	644	0	JCF
Barisal	Patuakhali	2	42	0	109	326	116	26	Speed Trust
Barisal	Patuakhali	3	246	174	247	1152	206	0	SAP-BD
Barisal	Patuakhali	4	125	53	281	601	64	0	JCF
Barisal	Patuakhali	5	31	14	71	116	19	0	JCF
Barisal	Patuakhali	6	54	0	39	90	30	0	CODE
Barisal	Patuakhali	7	461	0	301	1408	152	10300	JCF
Barisal	Barguna	1	466	0	386	2545	285	0	CBDP
Barisal	Barguna	2	657	0	689	1734	194	155	ST
Barisal	Barguna	3	319	0	437	1130	156	0	CODEC
Barisal	Barguna	4	66	66	66	66	66	66	Jagonari
Barisal	Barguna	5	110	0	126	650	69	0	CODEC
Barisal	Pirojpur	1	46	0	48	415	52	0	BDS
Barisal	Pirojpur	2	139	0	261	486	117	0	BDS
Barisal	Pirojpur	3	17	0	50	52	23	0	BDS
Barisal	Pirojpur	4	112	138	231	689	96	4	CODEC
Barisal	Pirojpur	5	86	0	98	530	77	0	BDS
Barisal	Pirojpur	6	64	6	49	314	55	0	BDS
Barisal	Pirojpur	7	2	9	0	0	0	0	SDO(BDS)
Barisal	Jhalokathi	1	131	611	168	614	104	0	DMUS, BDS
Barisal	Jhalokathi	2	242	618	291	618	283	0	DMUS-BDS
Barisal	Jhalokathi	3	25	73	127	208	31	0	BRAC
Barisal	Jhalokathi	4	41	79	209	218	61	0	BRAC
Barisal	Barisal	1	341	0	426	954	86	4	CODEC
Barisal	Barisal	2	147	112	100	94	0	0	JCF
Barisal	Barisal	3	23	0	97	178	50	3	JCF
Barisal	Barisal	4	108	254	203	337	25	0	BDS
Barisal	Barisal	5	34	143	92	364	27	0	BDS
Barisal	Barisal	6	15	79	78	340	46	2	BDS
Barisal	Barisal	7	86	0	227	515	42	0	BDS
Barisal	Barisal	8	0	0	73	310	38	0	BDS
Barisal	Barisal	9	54	0	116	701	68	7	JCF
Barisal	Bhola	1	14	17	24	62	10	7	GJUS
Barisal	Bhola	2	58	48	39	82	41	48	SWO
Barisal	Bhola	3	238	170	349	811	144	12	COAST Trust
Barisal	Bhola	4	0	0	198	440	65	0	DIP unnyan Society (DUS)
Barisal	Bhola	5	101	0	164	484	87	0	COAST Trust
Barisal	Bhola	6	7	9	13	28	5	16	USHIK
Barisal	Bhola	7	9	0	20	53	11	2	USHIK
Khulna	Bagerhat	1	97	0	136	896	0	3	JJS
Khulna	Bagerhat	2	0	0	0	0	1	0	SHAPLAP HUL
Khulna	Bagerhat	3	85	23	132	184	32	0	CODEC
Khulna	Bagerhat	4	36	4	47	221	72	0	CODEC
Khulna	Bagerhat	5	1	4	21	69	11	0	CODEC
Khulna	Bagerhat	6	8	25	18	57	19	0	CODEC
Khulna	Bagerhat	7	27	47	70	204	24	5	CODEC
Khulna	Bagerhat	8	32	39	64	197	32	33	CODEC
Khulna	Bagerhat	9	22	20	105	30	25	0	Multi Trust
Khulna	Khulna	1	6	0	2	24	8	0	BRAC
Khulna	Khulna	2	0	0	0	0	0	0	BRAC
Khulna	Khulna	3	0	0	0	0	0	0	BRAC
Khulna	Khulna	4	0	0	0	0	0	0	BRAC
Khulna	Khulna	5	1	0	3	14	0	0	BRAC
Khulna	Khulna	6	4	0	5	10	3	0	BRAC
Khulna	Khulna	7	0	0	0	5	4	0	BRAC
Khulna	Khulna	8	2	0	16	19	0	0	BRAC
Khulna	Khulna	9	0	0	0	0	0	0	BRAC
Khulna	Khulna	10	29	12	16	132	11	0	BDS
Khulna	Satkhira	1	0	0	0	0	0	0	UTTARAN
Khulna	Satkhira	2	0	0	0	0	0	0	UTTARAN
Khulna	Satkhira	3	0	0	0	0	0	0	UTTARAN
Khulna	Satkhira	4	4	0	4	0	0	0	UTTARAN

Total number of Children in the affected schools - Upzilla wise

Division	District	Upazilla	Pre-primary-Boys	Pre-primary-Girls	Primary - Boys	Primary - Girls	High Shool - Boy	High Shool - Girls	Madrasa - Boys	Madrasa - Girls
Barisal	Patuakhali	1	0	0	9297	8364	5765	6519	3044	2808
Barisal	Patuakhali	2	1455	1425	10552	8823	4309	4113	110	129
Barisal	Patuakhali	3	0	0	11193	11902	4843	5679	50	23
Barisal	Patuakhali	4	0	0	13830	12753	10279	8434	0	0
Barisal	Patuakhali	5	750	795	6717	7234	563	551	990	801
Barisal	Patuakhali	6	0	0	3923	4269	6468	4112	0	0
Barisal	Patuakhali	7	0	0	12018	13070	3541	4106	4217	2836
Barisal	Barguna	1	413	455	3864	3796	2365	2258	0	0
Barisal	Barguna	2	0	0	8364	8560	7126	5132	2924	2161
Barisal	Barguna	3	0	0	7805	7537	9904	9102	3067	2541
Barisal	Barguna	4	0	0	13923	15074	5796	6751	0	0
Barisal	Barguna	5	39	32	4889	4863	2073	1782	1643	1070
Barisal	Pirojpur	1	0	0	5012	5252	2043	2104	1738	485
Barisal	Pirojpur	2	0	0	6725	6897	3936	4284	2573	1219
Barisal	Pirojpur	3	0	0	2840	2925	1410	1155	1173	387
Barisal	Pirojpur	4	0	0	6326	6727	7253	9201	0	0
Barisal	Pirojpur	5	0	0	3020	3355	1635	2385	1480	882
Barisal	Pirojpur	6	0	0	2450	2660	690	876	525	100
Barisal	Pirojpur	7	270	455	53	91	1	83	120	78
Barisal	Jhalokathi	1	172	163	1028	818	300	300	777	280
Barisal	Jhalokathi	2	62	38	433	279	483	258	698	128
Barisal	Jhalokathi	3	500	455	10279	10822	8321	8117	960	675
Barisal	Jhalokathi	4	0	0	8010	7705	9180	7714	0	0
Barisal	Barisal	1	1262	1247	8380	7760	5361	6751	0	0
Barisal	Barisal	2	0	0	20	14	0	0	0	0
Barisal	Barisal	3	2577	2473	9618	10758	4455	2825	0	0
Barisal	Barisal	4	113	87	22035	21067	11645	14214	2433	2862
Barisal	Barisal	5	1255	1354	6235	6567	3205	3563	478	455
Barisal	Barisal	6	659	694	9108	10044	7405	7641	2898	2137
Barisal	Barisal	7	755	670	6638	5376	3838	3084	2470	2105
Barisal	Barisal	8	0	0	8236	7680	6150	6450	3250	3125
Barisal	Barisal	9	1950	2081	8892	9547	4411	5293	0	0
Barisal	Bhola	1	1107	1641	3397	3201	7615	6048	2484	2345
Barisal	Bhola	2	7040	7520	2020	2774	11160	9430	6535	1920
Barisal	Bhola	3	2694	3833	9256	11674	3681	5361	5241	7091
Barisal	Bhola	4	50	9	8035	7140	7862	5987	0	0
Barisal	Bhola	5	74	39	111	81	35	25	67	30
Barisal	Bhola	6	178	284	661	847	210	302	784	1305
Barisal	Bhola	7	32	45	1473	1590	1891	1715	2590	3491
Khulna	Bagerhat	1	0	0	0	0	0	0	0	0
Khulna	Bagerhat	2	0	0	0	2	3000	2000	0	0
Khulna	Bagerhat	3	556	348	2798	2874	4612	5545	0	0
Khulna	Bagerhat	4	292	297	4390	4478	8318	8225	0	0
Khulna	Bagerhat	5	194	261	1547	1464	3127	3788	0	0
Khulna	Bagerhat	6	374	275	1884	1967	3883	3709	0	0
Khulna	Bagerhat	7	32	33	2256	2388	4113	4235	0	0
Khulna	Bagerhat	8	232	237	4022	4163	6357	7010	0	0
Khulna	Bagerhat	9	200	230	6933	6620	15866	15751	11432	9692
Khulna	Khulna	1	0	0	1353	1415	771	789	0	0
Khulna	Khulna	2	0	0	1323	763	907	684	0	0
Khulna	Khulna	3	0	0	954	1391	1101	1352	0	0
Khulna	Khulna	4	0	0	50	50	53	54	0	0
Khulna	Khulna	5	91	86	978	756	5056	3621	0	0
Khulna	Khulna	6	95	75	410	443	644	694	0	0
Khulna	Khulna	7	0	0	610	518	713	550	0	0
Khulna	Khulna	8	40	50	2483	1987	1800	1162	0	0
Khulna	Khulna	9	0	0	239	201	0	0	0	0
Khulna	Khulna	10	0	0	3172	2796	1190	1365	1691	1440
Khulna	Satkhira	1	204	249	673	677	1015	1159	0	0
Khulna	Satkhira	2	118	77	867	663	1926	1684	2329	1980
Khulna	Satkhira	3	0	0	406	432	211	650	0	0
Khulna	Satkhira	4	0	0	693	829	203	151	361	472

Total number of children out of school due to disaster by Upzilla

Division	District	Upazilla	4-5 years Boys	4-5 years Girls	6-10 years - Boys	b2_6_10_ girl	11-18 years - Boys	11-18 years - Girls
Barisal	Patuakhali	1	400	451	0	0	0	0
Barisal	Patuakhali	2	383	368	1289	912	491	379
Barisal	Patuakhali	3	1364	1752	1959	2136	527	989
Barisal	Patuakhali	4	0	0	1240	1159	790	692
Barisal	Patuakhali	5	73	104	176	227	0	0
Barisal	Patuakhali	6	0	0	181	140	642	388
Barisal	Patuakhali	7	0	0	0	0	0	0
Barisal	Barguna	1	193	214	1683	1429	1215	1125
Barisal	Barguna	2	70	55	0	0	0	0
Barisal	Barguna	3	0	0	0	0	0	0
Barisal	Barguna	4	0	0	5157	5937	1788	2144
Barisal	Barguna	5	0	0	152	156	175	166
Barisal	Pirojpur	1	0	0	77	78	75	92
Barisal	Pirojpur	2	0	0	0	0	0	0
Barisal	Pirojpur	3	0	0	20	30	151	111
Barisal	Pirojpur	4	0	0	249	284	570	736
Barisal	Pirojpur	5	0	0	0	0	0	0
Barisal	Pirojpur	6	0	0	0	0	0	0
Barisal	Pirojpur	7	232	427	107	267	0	0
Barisal	Jhalokathi	1	134	78	143	88	143	100
Barisal	Jhalokathi	2	129	82	151	81	137	93
Barisal	Jhalokathi	3	2109	2124	2561	2529	3647	3478
Barisal	Jhalokathi	4	3559	2944	729	647	1611	1478
Barisal	Barisal	1	0	0	0	0	0	0
Barisal	Barisal	2	6	8	8	5	5	4
Barisal	Barisal	3	2280	2144	2777	2433	1290	1630
Barisal	Barisal	4	0	6	128	132	155	140
Barisal	Barisal	5	82	83	112	126	153	209
Barisal	Barisal	6	21	16	249	227	189	124
Barisal	Barisal	7	450	352	675	695	459	396
Barisal	Barisal	8	0	0	55	20	55	20
Barisal	Barisal	9	1950	2081	1315	1761	986	989
Barisal	Bhola	1	85	72	94	146	173	337
Barisal	Bhola	2	138	102	42	81	114	101
Barisal	Bhola	3	265	625	1207	1728	990	1710
Barisal	Bhola	4	10	2	8311	7327	7371	5661
Barisal	Bhola	5	0	0	0	0	0	0
Barisal	Bhola	6	2	1	2	11	265	324
Barisal	Bhola	7	0	28	124	218	180	304
Khulna	Bagerhat	1	0	0	0	0	0	0
Khulna	Bagerhat	2	0	0	5100	3397	900	603
Khulna	Bagerhat	3	55	28	313	281	525	1096
Khulna	Bagerhat	4	93	84	390	659	396	596
Khulna	Bagerhat	5	62	64	151	303	475	416
Khulna	Bagerhat	6	224	131	58	52	181	145
Khulna	Bagerhat	7	20	15	81	89	267	242
Khulna	Bagerhat	8	65	68	362	339	453	742
Khulna	Bagerhat	9	55	99	265	398	204	291
Khulna	Khulna	1	12	22	133	134	160	88
Khulna	Khulna	2	0	0	0	0	0	0
Khulna	Khulna	3	0	0	60	70	34	71
Khulna	Khulna	4	0	0	0	0	3	4
Khulna	Khulna	5	0	0	6	8	48	35
Khulna	Khulna	6	2	3	78	81	54	74
Khulna	Khulna	7	0	0	21	40	48	26
Khulna	Khulna	8	0	0	56	35	65	57
Khulna	Khulna	9	0	0	0	0	0	0
Khulna	Khulna	10	0	0	50	60	52	36
Khulna	Satkhira	1	0	0	0	0	0	0
Khulna	Satkhira	2	0	0	0	0	0	0
Khulna	Satkhira	3	0	0	0	0	0	0
Khulna	Satkhira	4	0	0	0	0	0	0