



**Disaster Management Information Centre
Disaster Management Bureau (DMB)
Ministry of Food and Disaster Management**

Disaster Management and Relief Bhaban (6th Floor)
92-93 Mohakhali C/A, Dhaka-1212, Bangladesh
Phone: +88-02-9890937, Fax: +88-02-9890854
Email: info@dmic.cdmp.org.bd, dmb@bttb.net.bd
Web: <http://www.cdmp.org.bd>, www.dmb.gov.bd

Emergency Title:	Cyclonic Storm "SIDR"
Emergency Location:	Bangladesh 20°22'N-26°36'N, 87°48'E-92°41'E,
Covering Period:	From: MON-19-NOV-2007:1800 To: TUE-20-NOV-2007:1800
Transmission Date/Time:	TUE-20-NOV-2007:2100
Prepared by:	DMIC, DMB

Summary of Cyclone Situation

Updated official report illustrates that the number of death caused by tropical cyclone 'SIDR' has risen to **2837**. Updates also indicate that **5488216** people of **1322824** families were affected by the cyclone. These casualties and damages of houses, livestock, crops, educational institutions, roads and embankments have been reported from 1700 unions of 200 upazilas of 30 districts.

BDT 138.00 million have been allocated from Honourable Chief Advisor's Relief and Welfare Fund to the Sidr victims. GoB has allocated 7070 MT GR Rice, BDT 15.22 million GR Cash, BDT 14.62 million as House Building Grant from the Directorate of Relief and Rehabilitation (DRR).

Today Bangladesh Air Force has sent 10 helicopter missions carrying 23 tons of relief containing mainly food items. Another AC-130 aircraft with 07 tons of relief items has been sent to affected districts.

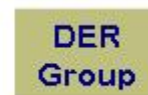
Among others UN System, DFID, Japan, WFP, UNICEF, USAID, Islamic Relief, UK, China, Spain, Libya, Australia committed their relief and other assistance to the SIDR victims.

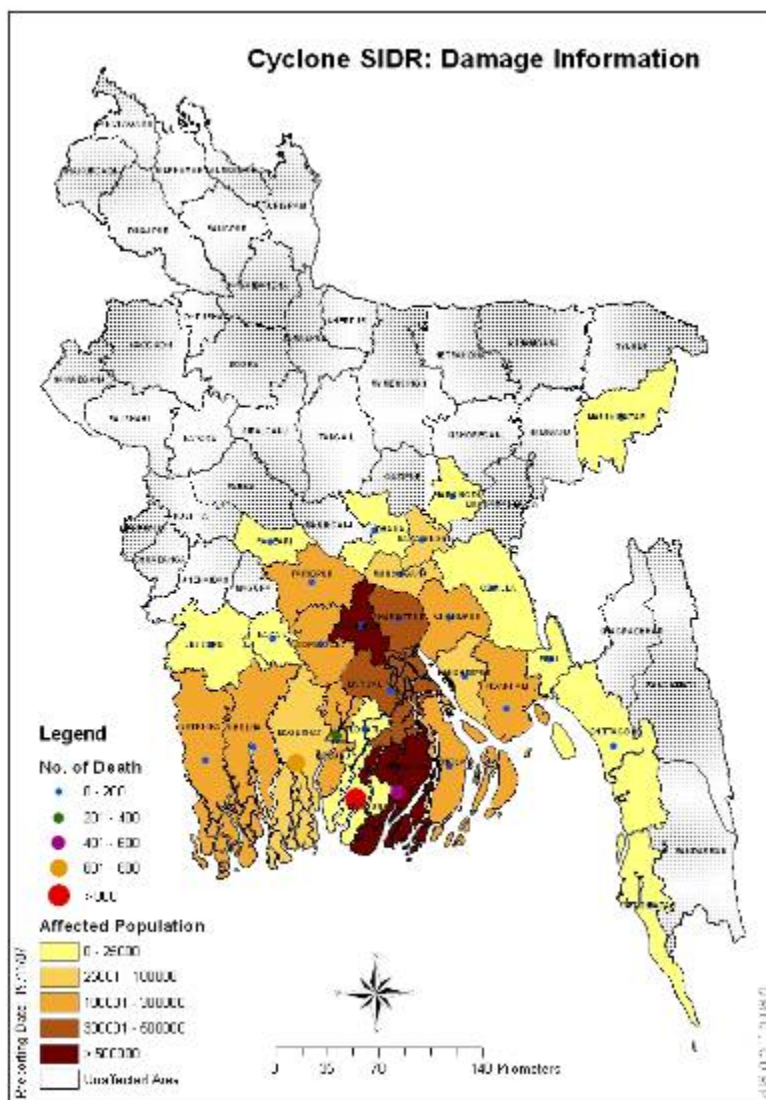
Among others Oxfam Australia, USAID, American Red Cross, Action Against Hunger, ADRA International, AmeriCares, Baptist World Aid, Catholic Relief Services, Christian Reformed World Relief Committee (CRWRC), Church World Service, Lutheran World Relief, Food for the Hungry, Habitat for Humanity International, The Hunger Project, MAP International, Mercy-USA for Aid and Development, Operation USA, Plan USA, Presbyterian Disaster Assistance and Hunger, Relief International, Save the Children, USA, U.S. Fund for UNICEF, World Vision, UMCOR's Response etc have started their assistance in different way like providing relief, relief fund, house hold material, food and non food items, water and sanitation items.

UN Agencies are continuing their assistance in damage assessment and relief.

Total Death: 2837
People Missed: 2176
Family Affected: 1322824
People Affected: 5488216
Houses Damages: 1123553
Crops Damaged: 1419683 acre
Trees Destroyed: 1684076

The Disaster Management Information Centre is the information hub of the Ministry of Food and Disaster Management for risk reduction, hazard early warnings and emergency response and recovery activities





SIDR Damage *

[* For higher resolution map please email: info@dmic.cdmp.org.bd]

Allocation of Relief from Honorable Chief Advisor’s Relief and Welfare Fund

Allocation from Tejgaon, Dhaka

Cotton Saree 15579 pcs, Synthetic Saree 58074 pcs, Lungee (large) 3766 pcs, Lungee (small) 1088 pcs, Pant (small/large) 5889 pcs, Safari Jacket (shirt) 1404 pcs, Trouser (pant – NCO) 6389 pcs, T-shirt 2470 pcs, Blanket old Army 2318 pcs, Winter cloths 30000 pcs, old cloths 40527, aluminum plate 1938 pcs, steel bowl 3698, steel plate 4139, steel cup 2480, Ceramic cup 192220, miscellaneous glass utensils 127291, different types of mugs 12000, water purifying machine 10, match boxes 540000, soap (Angelic) 65000, candle 9800, rice 2910 kg, lentils (Moshur) 3530, lentils (Chana) 48 kg, salt 7 kg, flour 3017 kg, sugar 2 kg, edible oil 4795 lit., Halotab tablet (15 mg) 802 boxes, Klotec (2 lit.) 200 case, Klotec-D (0.50%) 200 boxes, oral saline 346267 packets, savlon (liquid 1000 ml) 120 bottles.

Allocation from regional relief centers:

1. Plastic water jerrycan 12540 pcs (from Bogra), 14990 pcs (from Chittagong), 500 pcs (from Comilla), 14918 pcs (from Jessore).

The Disaster Management Information Centre is the information hub of the Ministry of Food and Disaster Management for risk reduction, hazard early warnings and emergency response and recovery activities

2. Plastic water mug 15000 pcs (from Bogra), 14744 pcs (from Jessore), 14980 pcs (from Chittagong), and Saudi blanket 2000 pcs (from Chittagong).

Contribution to Chief Adviser's Relief and Welfare Fund

If you would like to contribute to the "**Chief Adviser's Relief and Welfare Fund**" you may follow any of the following procedures:

Cash money or Bank cheque:

A. You may directly deposit your monetary contribution (cash money or bank cheque or any other form of banking transaction) directly to the following account:

Chief Adviser's Relief & Welfare Fund
Current Account No. 33004093
Sonali Bank, Prime Minister's Office Branch
Tejgaon, Dhaka

B. You may send your crossed cheque (Not cash money) to the fund with a forwarding letter to the following address:

Principal Secretary
Chief Adviser's Office
Tejgaon, Dhaka, Bangladesh
Attention: Assignment Officer, Chief Adviser's Office

C. If you would like to hand over your contribution to the honorable Chief Adviser personally, you may send a fax mail with your details (Contact address, phone and fax numbers) to the following faxes: + 880-2-8151700, + 880-2-8111490. This office will contact you for further action in this regard.

Relief goods:

D. If you are interested to send any other kind of relief for the flood affected people then you may fax with relevant details of the contribution and your contact address to the following fax numbers: + 880-2-8151700, + 880-2-8111490. This office will contact you for further action in this regard.

Other information:

E. If you have any other queries in regard to your contribution to the "Chief Adviser's Relief and Welfare Fund" you may contact the Assignment Officer to the Honorable Chief Adviser in the following phone number: + 880-2-8153082.

Relief from Trifoundation

Following relief materials were provided by Trifoundation:

- 2300 bags of food items containing flatten rice, biscuit and water in each bags
- Blanket 681 pcs
- Sweater 16 carton

[Source: Directorate of Relief and Rehabilitation]

Commitment of assistance for Cyclone "SIDR" by the Development Partners

SI No	Country/ Organisation	Committed Amount	Implementing Agency	Remarks
01	UN System	\$ 7.00 million	UN Agencies	
02	DFID	\$ 5.00 million (Through UN System)	UN	
03	Japan	Tk 100 Crore (\$14.00 million)	JAICA	
04	WFP	\$ 6.00 million 378 MT Biscuit 10,000 MT Rice	WFP	178 MT biscuit already disbursed 200 MT yet to be disbursed
05	UNICEF	Water purified tablets Tube well & Jarican \$1.5 million for medicine 92 MT baby food	UNICEF	
06	USAID	\$ 2.10 million 35 MT goods	USAID	
07	Islamic Relief, UK	£ 1.00 million (Relief goods) £ 3.00 million (Rehabilitation)	IR, UK	
08	China	\$ 1,00,000		
09	Spain	750000 Euro		
10	Libya	1 m USD		
11	Australia	2.7m USD		

Details of Assistance Being Provided By Different Organizations/Agencies

[Source: Reliefweb.Int]

Oxfam Australia

Oxfam Australia announced that have contributed AUD\$100000 to the relief effort. These funds will go towards providing urgently food and shelter to tens of thousands of people. Donations to aid those affected by Cyclone Sidr in Bangladesh can be made by contacting Oxfam Australia www.oxfam.org.au or 1800 088 110

USAID

The U.S. Agency for International Development (USAID) is sending an additional \$2 million in emergency funds to assist relief efforts in Bangladesh after Tropical Cyclone Sidr made landfall. The International Federation of Red Cross and Red Crescent Societies will receive \$1 million of this new funding for water and sanitation programs and to provide shelter materials to those in need. The remainder of the funding will be directed to humanitarian organizations currently working in the affected area and will assist in meeting the immediate needs of the Bangladeshi people. This new funding is in addition to the initial \$100,000 provided by USAID immediately after the cyclone, bringing the total U.S. Government assistance to \$2.1 million to date.

The United States extends its deepest sympathies to the government and people of Bangladesh in the face of this major natural disaster and stands ready to further assist in the relief effort based on needs identified in the coming days.

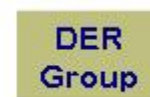
American Red Cross

The American Red Cross is responding to the International Federation of Red Cross and Red Crescent Societies (International Federation) and the Bangladesh Red Crescent Society's (BDRCS) Cyclone SIDR relief operation by contributing more than \$1.2 million in financial assistance that includes a \$1 million grant from the U.S. Government's Agency for International Development (USAID) in support of water and sanitation and shelter activities.

Action Against Hunger

Action Against Hunger (already in Bangladesh because of the floods last August) is reinforcing its teams with an emergency team who can assess the situation and the needs in terms of access to food, water and sanitation, as well as the future essential needs of housing and food.

The Disaster Management Information Centre is the information hub of the Ministry of Food and Disaster Management for risk reduction, hazard early warnings and emergency response and recovery activities



U.S. Fund for UNICEF

U.S. Fund for UNICEF is raising funds for UNICEF programs in Bangladesh. UNICEF is on the ground working in close collaboration with the government and other UN agencies. Focus is on water, sanitation and hygiene (jerry cans, water transport), health and nutrition (i.e. high energy biscuits), child protection (i.e. recreational kits) and education, and the provision of non-food items. Estimated immediate funding requirement is US\$2,355,000.

Save the Children, USA

Save the Children is distributing 10,000 items including plastic sheeting, water containers, basic toiletries, eating and cooking supplies as well as 1,500 blankets and 10,000 water tablets.

ADRA International

Emergency response teams based out of the ADRA Bangladesh office in Dhaka are evaluating storm damage and determining the most urgent needs in cyclone-affected areas. Once assessments are completed, ADRA will initiate an emergency response to meet the immediate needs of survivors, which are expected to include food, water, shelter, and clothing.

AmeriCares

An AmeriCares relief team has arrived in Bangladesh and is working with partners to evaluate the damage from Cyclone SIDR. It is also preparing an emergency airlift aid to the region.

Baptist World Aid

Baptist World Aid (BWAid) with two member bodies in Bangladesh, the Baptist Sangha and the Fellowship, have been feeding cyclone survivors and distributing food. A commitment has been made by the Sangha to assist 150 families to rebuild their homes. BWAid has launched a worldwide appeal for funds to assist.

Catholic Relief Services

Catholic Relief Services (CRS) has committed an initial \$50,000 to relief efforts across the cyclone-affected areas of Bangladesh. CRS is working with Caritas Bangladesh and collaborating closely with the local government now is preparing life-saving assistance to meet immediate needs, including food, water, plastic sheeting and blankets. The agencies have also positioned water cans and water purification tablets at shelters to provide immediate, clean drinking water.

Christian Reformed World Relief Committee (CRWRC)

CRWRC is currently distributing initial emergency food aid to affected survivors in Kolapara, Gochipa, Khepupara and Shwrankhola. A CRWRC is working with Bangladeshi partner Lutheran Health Care Bangladesh (LHCB). A second phase program of non-food items such as blankets, clothing, cooking utensils and other essentials will follow CRWRC's initial emergency food distribution. CRWRC is making plans to follow the initial two-phase emergency response with targeted food-and-seed programs that will help farmers restore the agricultural base of the area.

Church World Service

Church World Service is responding to Cyclone SIDR by supporting its partners and fellow members of the Action by Churches Together (ACT) International alliance. CWS partners are beginning emergency support for more than 35,500 people in southern Bangladesh by distributing rice, pulses, salt and oil as well as oral re-hydration salts, ensuring two meals a day for at least five days. Distribution will focus on the districts of Bagerhat, Barisal, Gopalganj, Khulna and Madaripur. Episcopal Relief and Development will be responding in cooperation with Action by Churches Together (ACT) and the Church of Bangladesh.

Lutheran World Relief

Through the ACT International alliance, LWR is providing immediate emergency assistance to 7,100 cyclone affected families through a distribution of food aid and oral dehydration saline. The target group comprises the very poor and destitute. Special attention will be paid to women, children, the elderly and disabled.

Food for the Hungry

Food for the Hungry relief workers are providing immediate food and shelter, clothing, basic medical supplies, and water and sanitation.

The Disaster Management Information Centre is the information hub of the Ministry of Food and Disaster Management for risk reduction, hazard early warnings and emergency response and recovery activities

Habitat for Humanity International

Habitat for Humanity has launched an initial assessment of shelters, through its National Organization, Habitat for Humanity Bangladesh.

The Hunger Project

The Hunger Project volunteers are distributing supplies and preparing rehabilitation plans in affected areas.

MAP International

MAP International is assembling medical aid to prevent further loss of life.

Mercy-USA for Aid and Development

Mercy-USA for Aid and Development, through local partner Assistance for Humanitarian Development (AHD), is distributing food packages containing 44 pounds of rice, 6.6 lb. of lentils, one liter of cooking oil, salt and high protein biscuits to families left homeless by the cyclone.

Operation USA

Operation USA has worked in Bangladesh on 2 previous cyclone and flood disasters and works thru local NGOs and international organizations providing bulk supplies to re-establish basic health services--funds are used for transportation, local purchase and grant making for small clinics and social service agencies. Operation USA is accepting cash and new bulk corporate in-kind donations only.

Plan USA

Plan began immediate emergency relief operations with delivery of food, water, and medicines the day after SIDR made landfall. Its on-going program targets 50,000 people in the hard hit coastal districts of Barisal, Barguna, and Patuakhali with distribution of food and non-food items, shelter, medicines, and water, as well as implementation of sanitation efforts.

Presbyterian Disaster Assistance and Hunger

Presbyterian Disaster Assistance is working with partner Christian Commission for Development in Bangladesh (CCDB) and in cooperation with members of the Action by Church Together (ACT) Alliance in Bangladesh to provide emergency food support including rice, pulses, salt and oil as well as oral re-hydration salts. The initial assistance will ensure two meals a day for at least five days, targeting particularly vulnerable groups of people including widows, children, the elderly, disabled and those without land in the districts of Bagerhat, Barisal, Gopalganj, Khulna and Madarapur.

Relief International

In response to cyclone SIDR, Relief International's Bangladesh Disaster and Risk Management Team is on the ground working closely with local government and NGO partners conducting assessments to identify gaps in emergency relief assistance.

World Vision

World Vision teams are already sheltering 20,000 people from the devastation of Hurricane SIDR. Donations will provide urgent, lifesaving aid such as food, clean drinking water, blankets, warm clothing and more to these children and families, as well as others affected by this brutal storm.

UMCOR's Response

UMCOR anticipates its response to be through partner agencies in Action by Churches Together and Muslim Aid, a British-based relief agency already working in the affected area of Bangladesh.

To give to UMCOR's work in response to Cyclone Sidr, please make out your check to UMCOR and mail it to UMCOR PO Box 9068, New York, NY 10087. Write "UMCOR Advance #202400, Bangladesh Emergency" on the memo line of your check. One hundred percent of every donation to any appeal, including appeals for Bangladesh, goes to support the designated program.

**Bangladesh Red Crescent Society
Relief Activities for Cyclone SIDR - 2007
Date: November 20, 2007**

Sl. No.	Name of District	Amount of Cash (BDT)	Family Kits (Carton)	Plastic Sheets (pcs)	Blanket (pcs)	Saree (pcs)	Lungee (pcs)	Number of Medical Team	Distribution and Other Expenses
1	2	3	4	5	6	7	8	9	10
1	Borguna	500000	700	350	700	700	700	2	60000
2	Bagerhat	500000	700	350	700	700	700	1	60000
3	Pirozpur	500000	700	350	700	700	700	1	60000
4	Patuakhali	500000	700	350	700	700	700	2	60000
5	Jhalokathhi	500000	700	350	700	700	700		60000
6	Barisal	500000	700	350	700	700	700		60000
7	Khulna	300000	500	250	500	500	500	1	40000
8	Bhola	300000	500	250	500	500	500		40000
9	Madaripur	300000	500	250	500	500	500		40000
10	Gopalganj	300000	500	250	500	500	500	1	40000
11	Satkhira	300000	500	250	500	500	500		40000
12	Laxmipur	300000	500	250	500	500	500		40000
13	Chandpur	150000	400	200	400	400	400		30000
14	Faridpur	150000	400	200	400	400	400		30000
15	Narayanganj	150000	400	200	400	400	400		30000
16	Noakhali	500000	700	350	700	700	700	2	60000
17	Shariatpur	500000	700	350	700	700	700	2	60000
18	Munshiganj	150000	400	200	400	400	400		30000
Total		6400000	10200	5100	10200	10200	10200	12	840000

[Source: Bangladesh Red Crescent Society]

**Directorate of Relief and Rehabilitation
Relief Activities for Cyclone SIDR - 2007
From November 15, 2007 to November 20, 2007**

Sl. No.	District	Allocated								Allocation from Honorable Chief Advisor's Relief and Welfare Fund
		GR Rice (MT)	GR Cash (BDT)	House Building Grant (BDT)	Others					
					Foods (Bag)	Blanket (pcs.)	Tent (pcs.)	Utensils (Carton)	CI Sheets (Bundle)	
1	2	3	4	5	6	7	8	9	10	11
1	Patuakhali	940	2300000	2000000	6500	1000	450	500	2000	15000000.00
2	Bagerhat	750	2367000	2000000	8000	1000	450	500	2000	20000000.00
3	Borguna	830	1850000	1925000	6500	1000	450	500	1500	20000000.00
4	Jhalokathhi	490	1905000	1000000	6000	1000	200	0	1000	5000000.00
5	Pirozpur	835	2320000	1900000	0	1000	200	500	1500	10000000.00
6	Satkhira	275	1086000	500000	0	1000	700	500	500	10000000.00
7	Barisal	900	400000	300000	0	1000	700	500	2000	5000000.00
8	Bhola	250	800000	1000000	0	1000	700	0	500	10000000.00
9	Laxmipur	200	375000	0	0	1000	300	0	0	10000000.00
10	Khulna	300	1400000	1000000	0	1000	350	348	500	10000000.00
11	Gopalganj	400	0	1000000	0	1000	300	0	500	5000000.00
12	Shariatpur	200	0	1000000	0	1000	300	0	500	5000000.00
13	Madaripur	300	0	1000000	0	1000	300	0	500	10000000.00
14	Faridpur	100	0	0	0	1000	0	0	0	3000000.00
15	Munshiganj	100	0	0	0	0	0	0	0	0.00
16	Dhaka	0	0	0	0	0	0	0	0	0.00
17	Cox's Bazar	0	0	0	0	1000	600	0	0	0.00
18	Chittagong	0	0	0	0	1000	700	0	0	0.00
19	Chandpur	200	425000	0	0	1000	350	0	0	0.00
20	Noakhali	0	0	0	0	1000	450	0	0	0.00
Total		7070	15228000	14625000	27006	18000	7500	3348	13000	138000000

[Source: Directorate of Relief and Rehabilitation]

Situation Report

Damage Report due to Cyclone SIDR

[Source: Ministry of Food and Disaster Management (MoFDM) Relief Control Cell (RCC); Date: November 20, 2007 compiled at 1730 BST]

Sr No	Name of District	No. of affected upazilla	No. of affected union	No. of Affected Family	No. of Affected People	Damaged Crops (Acr)		Damaged Households		No. of death	No. of injured people	No. of lost people	No. of livestock death	Affected Educational Institute		Damaged Road (km)		Damaged Bridge/ Culvert	Damaged Embankment (km)	Damaged Trees
						Full	Partial	Full	Partial					Full	Partial	Full	Partial			
						7	8	9	10					11	12	13	14			
1	Khulna	9	68	67739	299937	2449	30773	17221	33958	16	59		559	2	101				4.25	45170
2	Satkhira	7	69	34659	169166	30	40770	4918	11059	19	2	1	157		52		17		14.75	
3	Bagerhat	9	75	120900	366000		106089	161000	51700	713	1008		4192							
4	Barisal	10	85	291705	350000		223563	41470	70157	88			915		2025					
5	Jhalokathi	4	34	140352	700000	117169		62229	15500	41	10882		289	606				20		300000
6	Pirojpur	7		31500	155256	366	1202	12900	12600	374	163	446	240200	113	573	28	295		10	40
7	Borguna	5	38	110300	625000		152996	94800	15500	979	5000	1500	96871	277	557	480		1634	258	1000000
8	Bhola	7	42	28771	147718		148862	15389	20000	41	10	4	7658	665		86545				
9	Patuakhali	7	68	86800	611125		103172		193528	426			221		1022		838			
10	Noakhali	5	88	33740	217300	3125	19625	980	2200	1	35		250			150			8	
11	Feni	6	23	35	156		263		30											
12	Laxmipur	5	54	9988	55695		127483	1479	6652	2	1	1	2		133					
13	Chandpur	8	123	38133	175579		19301	10342	15443	4			70	47	279		40		2	81673
14	Chittagong	5	36	2811	12505	1853	1482	603	5181	1						30	40			
15	Cox's Bazar	8	40	1842	8070		176	40	876										18	
16	Jessore	8	94				2008			1	7									
17	Comilla	16	162	14119	70527		30104	806	3412						98					
18	Faridpur	8		38635	154540		75542	1000	37635	13		3	25		34					153300
19	Dhaka	5					9114	15	2358	6	2				0	0	0	0	0	0
20	Munshiganj	6	67	18002	93771	3080	2458	480	2230	7	18				6		23			
21	Gopalgang	5	68	48316	204100		24700		85000	34	20		87							
22	Madaripur	4	58	92300	595000	3330	9460	4991	7509	40	119		30	37	91					30444
23	Shariatpur	6	65	87472	378778	8232	17251	23362	50460	17	1232		77	31	480					72750
24	Rajbari	4	42				9359	3789	755	1										499
25	Narayanganj	4	44	14164	56998	6889	1297	476	5156	7			153		35					200
26	Narsingdi	6	70				34301	24	5280	3			2							
27	Narail	3	41	4919	22100		16213		8228	1					48					
28	Moulvibazar	3	8	149	755		80	60	89	2			56							
29	Kishorganj	13	73	5473	18140		16087	55	2628				765	2	3					
30	Manikganj	7	65			6807	42622						5							
	Total	200	1700	1322824	5488216	153330	1266353	458429	665124	2837	18558	2176	352363	1780	5537	538	87948	1654	315	1684076

The Disaster Management Information Centre is the information hub of the Ministry of Food and Disaster Management for risk reduction, hazard early warnings and emergency response and recovery activities