



**Disaster Management Information Centre  
Disaster Management Bureau (DMB)  
Ministry of Food and Disaster Management**

Disaster Management and Relief Bhaban (6<sup>th</sup> Floor)  
92-93 Mohakhali C/A, Dhaka-1212, Bangladesh  
Phone: +88-02-9890937, Fax: +88-02-9890854  
Email: [info@dmic.cdmp.org.bd](mailto:info@dmic.cdmp.org.bd), [dmb@btcl.net.bd](mailto:dmb@btcl.net.bd)  
Web: <http://www.cdmp.org.bd>, [www.dmb.gov.bd](http://www.dmb.gov.bd)

**Emergency Title:**

**Summary of Cyclonic Storm "AILA"**

**Emergency Location:**

**Bangladesh**  
20°22'N-26°36'N, 87°48'E-92°41'E,

**Covering Period:**

From: TUE-29-MAY-2009:1430  
To: TUE-30-MAY-2009:1200

**Transmission Date/Time:**

TUE-30-MAY-2009:1500

**Prepared by:**

DMIC, DMB

**Summary of Cyclonic Storm "AILA"**

**Current Situation**

Total 14 districts were affected by the cyclone. 147 persons reported dead. Many areas of the affected districts were inundated and houses, roads and embankments were damaged. Detailed damage information collection is in progress.

Government administration, local elected representatives and other Non Government organizations are now working in rescue and response in cyclone affected upazilas around the coastal areas. These organization have started their relief and rehabilitation operations immediately just after the cyclone crossed over.

Local elected representatives and elites are encouraging and providing confidence to the affected people for facing the situation. The Bangladesh army and Coast Guard are trying to establish local communication and still handling the rescue operations.

**Total Death: 155**  
**People Missed: 10**  
**People Injured: 7,108**  
**Family Affected: 8,01,602**  
**People Affected: 36,06,116**  
**Houses Damaged: 5,64,315**  
**Crops Damaged: 3,27,406 acre**

**Actions Taken**

- In a special meeting of Disaster & Emergency Response (DER) group, the Director General of the Disaster Management Bureau and the chair has requested NGOs to respond immediately to the situation and to notify the Disaster Management Information Centre (DMIC) of their current and planned activities.

The Disaster Management Information Centre is the information hub of the Ministry of Food and Disaster Management for risk reduction, hazard early warnings and emergency response and recovery activities



- All organisations are requested to send the following information to the DMIC at [info@dmic.cdmp.org.bd](mailto:info@dmic.cdmp.org.bd) as soon as possible **today (30/05/09)**:
  - The outcomes of any need assessments that have been conducted.
  - Details of response and relief activities. Please indicate if the activities are completed, still underway or in the planning stage.

A map will be produced from this data indicating 'who is doing what and where'. It will be disseminated **tomorrow 31/05/09** - hence the urgency of the information request.

- There will be a meeting to coordinate need assessments, and disaster response and relief efforts **tomorrow (31/05/09) at 11am at the CDMP conference room.** All organisations are requested to send only one representative to this meeting.
- A total of BDT 2,78,84,300 G.R. Cash has been allocated to the "AILA" affected districts.
- G. R. Rice 18150.000 MT has been allocated to the "AILA" affected districts.
- A total of 18100 pcs of sarees, 6500 pcs of lungis have been allocated to the mostly affected districts.
- USAID will release \$100,000 in OFDA funding that will go to World Vision and CARE. They deployed 14 water treatment plants to the affected areas and released about \$20,000 for logistics/delivery of high energy biscuits from the Government of Norway and some non-food items. They are waiting for further assessments and proposals from their on the ground partners to divert funds from current programs for disaster response.

### Different Organization's Response

#### Integrated Development Organization (IDO)

IDO has taken initiatives to identify the need assessment immediately in Koyra, Paikgacha of Khulna and Shaymnagar of Satkhira. IDO planned to support of pure drinking water materials which have been provided by Oxfam-GB; and then in the rehabilitation purposes, houses, latrines and the domestic equipments will be supported and agricultural activities like seeds, fertilizer, agricultural tools and boat and net support for the fishermen. The current activities of IDO in the cyclone and storm surge affected areas are as follows:

SI #	Name of Upazilla	Item			
		PURE (pcs)	WPT	ORS	Alum (kg)
01	Shaymnagar	1,00,000	2,000	1500	100
02	Koyra	90,000	1500	1000	75
03	Paikgacha	57,000	1100	1400	25

[Source: IDO, Data Date: May 29, 2009]

#### Rupantar

Immediately after the attack of cyclone AILA, Rupantar started emergency response to affected areas from 26th May 2009 with limited resources at its disposal. Rupantar received BDT 1,658,750 equivalent to US\$ 24,393 from USAID and BDT 1,184,000 equivalent to CHF 20,000 from Swiss Agency for Development and Cooperation (SDC) that is used for distribution of emergency dry food, children's food, drinking water, Alum, Bleaching powder and have plan for dewatering of ponds, cleaning public places, construction of PSF as well as Cash for Work in Gabura and Munshiganj Union of Shyamnagar Upazilla of Satkhira district, Uttar Beskashi, Dakshin Bedkashi and Koira Unions of Koira Upazilla, Sutarkhali and Kamarkhola Unions of Dacope Upazilla of Khulna district and Mongla, Rampal, Morelgonj, Saronkhola Upazilla of Bagerhat district. Rupantar's activities are conducted in coordination and cooperation of the local administration, Union Parishads, local NGOs and civil society leaders. Rupantar also has started Khulna based NGO coordination.

[Source: Rupantar, Data Date: May 29, 2009, 14:50]

The Disaster Management Information Centre is the information hub of the Ministry of Food and Disaster Management for risk reduction, hazard early warnings and emergency response and recovery activities

## Emergency Capacity Building Project

District	Upazilla	Union	Who	Doing What	Available resources, staff & funding
Satkhira	Assasuni	4	WVI	Detailed assessment being done. Planned to distribute 7 days survival package for 2650 families by next week. Water Purification Plant will be deployed by today.	
			CRS & Caritas	a modest dry ration support to those, who took refuge in shelter/s ;detailed assessment going on	BDT 500,000 (US\$ 7353) has been approved for Caritas Khulna and Barisal Offices for dry food (chira or flattened rice and gur or molasses) for the people taking shelters in the cyclone shelters.
	Shyam Nagar	3	CWW (Sushilan)	Planned Distribution of survival package for 7000 families from 31 May 09 (Each package includes: Flatten rice -4kg, moleases 1 kg, Biscuit 10 pacs, ORS 5 pcs, WPT 30 pcs, Candle 6 , Gas lighter 1)	Funding from Concern Ireland
			OGB (Leaders)	Damage & Need Assessment going on; Planned to deploy Water Purification Tank	Care will provide the tank to Oxfam
			WVI	Water will be supplied by installing Water Purification Tank at Satkhira. Detailed Damage & Need Assessment going on.	
			CRS & Caritas	a modest dry ration support to those, who took refuge in shelter/s ;detailed assessment going on	
	Khulna	Koyra	9	CWW (JJS)	Planned Distribution of survival package for 2000 families from 31 May 09(Each package includes: Flatten rice -4kg, moleases 1 kg, Biscuit 10 pacs, ORS 5 pcs, WPT 30 pcs, Candle 6 , Gas lighter 1)
SC (Prodipan)				Damage & Need Assessment; SC planned to establish 25 Child Friendly Spaces (CFS) in affected area of Khulna	
OGB(Rupantar)				Damage & Need Assessment going on; Planned to deploy Water Purification Tank	Care will provide the tank to Oxfam
Dacope			WVI	Distributed dry food and water to 189 families at shelters. Planned to distribute 7 days survival package for 3000 families by next week.	

The Disaster Management Information Centre is the information hub of the Ministry of Food and Disaster Management for risk reduction, hazard early warnings and emergency response and recovery activities

District	Upazilla	Union	Who	Doing What	Available resources, staff & funding
			CRS & Caritas	a modest dry ration support to those, who took refuge in shelter/s ; detailed assessment going on	
			SC (Prodipan)	Damage & Need Assessment; SC planned to primarily establish 25 Child Friendly Spaces (CFS) in affected area of Khulna	
	Paikgacha		SC (Prodipan)	Damage & Need Assessment; SC planned to establish 25 Child Friendly Spaces (CFS) in affected area of Khulna	
Bagerhat	Mongla	5	WVI	2200 ltr water distributed from the Water Purifying Tank installed at ADP campus. Plan to provide survival package for 3000 families by 5 next week.	
			CRS & Caritas	a modest dry ration support to those, who took refuge in shelter/s; detailed assessment going on	
			SC (Prodipan)	Damage & Need Assessment; SC planned to primarily establish 25 Child Friendly Spaces (CFS) in affected area of Bagerhat.	
	Morelganj	5	WVI	Assessment suggests providing safe drinking water to the 15000-20000 people. Planning to deploy one unit of water purifying machine.	
			SC (Prodipan)	Damage & Need Assessment; SC planned to primarily establish 25 Child Friendly Spaces (CFS) in affected area of Bagerhat.	
	Sarankhola		SC (Prodipan)		
	Rampal		SC (Prodipan)		
Pirojpur	Bhandaria	4	WVI	Assessment suggest not to go for emergency response (relief) as community has ability to cope with the situation. But recovery activities will be planned after detailed assessment.	
Borguna		3	SC (UDDIPAN)	Detailed Damage & Need Assessment is going on ;SC planned to primarily establish 25 Child Friendly Spaces (CFS) in affected area; Water Purification Plant installed by today	
			Plan Bangladesh	Monitoring the situation and could distribute NFI if required.	
Patuakhali		7	SC	RIR completed; Detailed Damage & Need Assessment is going one; Water Purification Plant deployed	

The Disaster Management Information Centre is the information hub of the Ministry of Food and Disaster Management for risk reduction, hazard early warnings and emergency response and recovery activities

District	Upazilla	Union	Who	Doing What	Available resources, staff & funding
			CWW (Speed Trust)	Damage & Need Assessment	
Bhola		7	SC	RIR completed; Detailed Damage & Need Assessment is going one ;dry food worth Tk 50,000 distribution today; WPT installed by today; 25 Child Friendly Space (CFS) will be established by next week.	
Barisal		3	SC	RIR completed; Detailed Damage & Need Assessment is going one	
Noakhali	Hatiya	2 (Jahaz Mara, Horoni)	CARE	Damage & Need Assessment; planning to distribute safe drinking water (5 ltr. Jerry Can) supported by USAID and BP-5 Biscuit (3 days survival food for each families) supported by Norwegian Government for 3200 families.	CARE has 5 Water Purifying Tank which can be used by other organizations for South. Meanwhile, CARE has agreed to handover two for Oxfam.
			CARE	With Support from OFDA/USAID, CARE will start transporting from CARE warehouse Dhaka to affected area) 920 sets of Shelter and NFI materials for the affected people in Nijhum Dwip. Shelter and NFI Material each Sets includes i) Plastic tent and rope ii) Aluminum cooking pot iii) Aluminum pitcher iv) Bucket v) Plastic mug vi) Candles vii) Mosquito net viii) Plastic glass and ix) Plastic bowl.	
		2 (naler Char, Kaning Char)	OGB (SSUS)	Damage & Need Assessment ; distribution of plastic sheet, ORS, WPT (tablet)	
	Suberna Char	3 (purba Char Bata, Maddha Char Bata, Chanandi)	CARE	Damage & Need Assessment; planning to distribute safe drinking water (5 ltr. Jerry Can) supported by USAID and BP-5 Biscuit (3 days survival food for each families) supported by Norwegian Government for 1800 families.	

**Note:** CRS=Catholic Relief Services; CWW=Concern World Wide; OGB=Oxfam GB, SC=Save the Children, SSUS=Sagorika, WVI= World Vision International

[Source: Emergency Capacity Building Project; Data Date: May 29, 2009, 17:54 BST]

The Disaster Management Information Centre is the information hub of the Ministry of Food and Disaster Management for risk reduction, hazard early warnings and emergency response and recovery activities



## UNICEF

UNICEF, with Department of Public Health Engineering, has activated the WASH Cluster Working Group in the aftermath of cyclone Aila. The meeting of WASH Cluster Working Group, represented by 15 major agencies, who have engaged themselves in carrying out rapid assessment and response. They are: ACF, ActionAid, BRAC, CARE, CARITAS, CRS, NGO Forum, Islamic Relief, Muslim Aid, Save the Children USA, Soledarites, and Sushilon. The meeting helped to have an overview of the WASH situation following the cyclone Sidr; and also helped establishing potential coordination among agencies as they plan their responses. The action/ decisions taken include:

- DPHE will provide instruction to their district offices to support with the supply of NFIs from their stores to NGOs operating in the field. This is to facilitate available supplies in DPHE stores outreach to affected communities.
- WASH Cluster Co-chair will prepare a matrix explaining: the agency presence across upazillas/ unions, field-partners of key WASH agencies in Aila, and types of emergency WASH responses the agencies are engaged/planning to be engaged;
- WASH Cluster Co-chair will arrange to share the emergency WASH technology feasibility matrix across all the unions in the country to the agencies responding to Aila at the earliest to enable them to plan and design their interventions
- WASH Cluster group will meet once again to avoid duplication of efforts and to avoid the possibility of negligent effort in some geographic locations next week or so as may be demanded by partners.
- WASH Cluster will closely review the situation and shall facilitate sub-national coordination as may be needed.

UNICEF has also released USD 8,800 to DPHE, to support:

- (a) The installation of temporary sanitary latrines for flood/cyclone/temporary shelters;
- (b) Transport safe drinking water to water-scarce locations; and
- (c) Also to procure and supply bottled water in limited scale as may be needed for some acute shortage locations.

This release was based on the urgent support request from the department.

[Source: UNICEF; Data Date: May, 28, 2009]

## Care

CARE Bangladesh started emergency response to the Cyclone AILA affected population as follows:

Village	Union	Upazila	# of HHs or Family
Nijhum Dwip	Jahaz mara	Hatiya	2,500
Boyar Char	Horoni	Hatiya	700
Char Nangalia	Purba Char bata	Subarnachar	600
Char Mojid	Maddha Charbata	Subarnachar	400
Karing Char	Chanandi	Subarnachar	800

- With Support from USAID, above 5,000 families will be provided with safe drinking water (5 liter. Jerry Can for each family)
- For the same above targeted population, with assistance from Norwegian Government, a total of 15 Metric Ton BP-5 Biscuits will be distributed as 3 days survival food for each family.
- CARE extended collaboration with Oxfam-GB by providing 2 (two) Water Treatment Plan (WTP) received from USAID. Those WTPs will be placed in Shaymnager Upazilla (Satkhira District) and Koira Upazilla (Khulna District) to provide safe drinking water for the cyclone affected people. Each of the WTP can produce 3,000+ liter safe drinking water per/hours.
- With support from OFDA/USAID, 920 Sets of Shelter & NFI materials have been transported to Noakhali to distribute among 920 mostly affected families in Nijhum Diwp. Each of Shelter

The Disaster Management Information Centre is the information hub of the Ministry of Food and Disaster Management for risk reduction, hazard early warnings and emergency response and recovery activities

and NFI Material Sets includes i) Plastic tent and rope ii) Aluminum cooking pot iii) Aluminum pitcher iv) Bucket v) Plastic mug vi) Candles vii) Mosquito net viii) Plastic glass and ix) Plastic bowl.

- An assessment team includes USAID, CARE and Local NGO SSUS, HASI representatives currently undertaking further immediate need assessment in Subarnachar and Hatia Upazilla in Noakhali.

[Source: Care; Data Date: May, 28, 2009]

## Muslim Aid

Muslim Aid fund has been allocated as follows for initial phase-:

30, 000 for Bhandarai, Pirojpur/dry food  
 100,000 for Sharonkhola, Bagerhat/ Water and CFW  
 300,000 for Golachipa, Patuakhali/ Food/ NFI  
 500,000 for Shamnagor, Sathkhira/ Food/ NFI/ Water  
 Food package would be- Rice- 5 Kg, Dal- 1 kg, Oil- 1 Lt, Salt- 1 kg

Muslim Aid sent 1 million water purification tablets to the field for distribution among the beneficiaries. The organization's field team at Shyamnagor has started to collect pure water through pick up and distribute among the victims and Sharonkhola team is pumping out saline water from pond so that people can use pond water as per their traditional way.

[Source: Muslim Aid; Data Date: May, 28, 2009]

## Red Cross and Red Crescent

### First 24 hours emergency response:

#### Emergency response from Bangladesh Red Crescent Society (BDRCS)

- Distribution of cash of BDT 30,000 to Barguna, Bhola, Bagerhat and Patuakhali units each and cash of BDT 50,000 will be sent to Satkhira unit for purchase of dry foods for emergency distribution.
- 2000 WPT and 5000 ORS sent with each team.
- BDRCS Satkhira Unit has collected TK 40,000 with which they were able to provide cooked food to 3,700 people in Satkhira districts.

#### Emergency response from IFRC and ICRC

- IFRC is coordinating with BDRCS and CPP holding regular meetings and they've mobilized teams to assist BDRCS in assessment and other forms of emergency response. IFRC is also constantly reporting updates to Regional, Zonal and Global headquarters. Based on assessment results.
- ICRC is also coordinating with BDRCS and has mobilized a tracing team that joined the assessment teams.

### Second 24 hours emergence response:

A combination of six teams of BDRCS and Federation formed to assess the damage at the Cyclone AILA affected districts as well as one tracing team to support the missing family members are in the field and are sending reports which is complementing the reports from the BDRCS CPP and district Unit offices. The preliminary information from the assessment teams seems to confirm government preliminary numbers and in some areas seem to increase the number of effected people. Based on which the decision has been taken to allocate the following non-food items by the BDRCS and IFRC:

Name of Dist	No of Families for NFI	Cash Grant for DryFood (BDT)	Plastic Sheet (pcs)	Sharee (pcs)	Lungee (pcs)	Jerry can (pcs)	Tent (pcs)	Garments (pcs)	WPT (pcs)	ORS (pcs)	Hygiene Parcel (pcs)	Blanket (pcs)
Barisal	1,000	30,000	1,000	2,000	2,000	1,000	100	2,000	20,000	10,000	1,000	2,000
Bhola	1,000	30,000	1,000	2,000	2,000	1,000	100	2,000	20,000	10,000	1,000	2,000

The Disaster Management Information Centre is the information hub of the Ministry of Food and Disaster Management for risk reduction, hazard early warnings and emergency response and recovery activities

Name of Dist	No of Families for NFI	Cash Grant for DryFood (BDT)	Plastic Sheet (pcs)	Sharee (pcs)	Lungee (pcs)	Jerry can (pcs)	Tent (pcs)	Garments (pcs)	WPT (pcs)	ORS (pcs)	Hygiene Parcel (pcs)	Blanket (pcs)
Pirojpur	1,000	30,000	1,000	2,000	2,000	1,000	100	2,000	20,000	10,000	1,000	2,000
Shatkhira	1,000	50,000	1,000	2,000	2,000	1,000	100	2,000	20,000	10,000	1,000	2,000
Khulna	1,000	30,000	1,000	2,000	2,000	1,000	100	2,000	20,000	10,000	1,000	2,000
Bagerhat	1,000	30,000	1,000	2,000	2,000	1,000	100	2,000	20,000	10,000	1,000	2,000
Barguna	1,000	30,000	1,000	2,000	2,000	1,000	100	2,000	20,000	10,000	1,000	2,000
Patuakhali	1,000	30,000	1,000	2,000	2,000	1,000	100	2,000	20,000	10,000	1,000	2,000
Chittagong		20,000										
Cox'sbazar		20,000										
Laxmipur		20,000										
Feni		20,000										
Noakhali		20,000										
<b>Total</b>	<b>8,000</b>	<b>360000</b>	<b>8,000</b>	<b>16,000</b>	<b>16,000</b>	<b>8,000</b>	<b>800</b>	<b>16,000</b>	<b>160,000</b>	<b>80,000</b>	<b>8,000</b>	<b>16,000</b>

[Source: Relief Department, BDRCS; Data Date: May, 28, 2009]

### Uttaran

In the coastal area of Satkhira and Khulna Uttaran is directly involved with the rescue and relief operations. In this emergency moment Uttaran is supplying dry food, drinking water, WPT, tube wells, necessary medicines, materials to bury the death and other necessary assistances to the effected people. Uttaran is carrying their special assistance at Gabura union of Shyamnagar upazila of Satkhira. By developing central emergency control cell Uttaran is collecting and disseminating updated information to respective sectors to take immediate actions through its center offices.

### Caritas

- BDT 500,000 (US\$ 7353) has been approved for Caritas Khulna and Barisal Offices for dry food (chira or flattened rice and gur or molasses) for the people taking shelters in the cyclone shelters.
- Steps are being taken to supply safe drinking water as existing water sources are damaged/contaminated. Based on the need more funds will be made available.
- Initial assessment is going on by the two Caritas Regional Offices.

[Source: Caritas; Data Date: May, 27, 2009]

### WFP

- WFP provided early warning approx 2-3 days before storm struck land; information regarding the location, strength, and projected path of the storm widely disseminated to partners and stakeholders.
- In collaboration w/ local government, WFP Jessore suboffice mobilized staff for rapid damages/needs assessment; covering affected districts including Satkhira, and Khulna, Pirojpur, Bagerhat.
- WFP Barisal suboffice collaborating w/ local government to compile and report damages/needs assessment data for Barisal, Bhola, Patuakhali, Barguna, Jhalokati.

[Source: WFP; Data Date: May, 26, 2009]

### WHO (Update from DGHS, MOHFW):

- A total of 686 medical teams (doctors, health assistants) are working in Satkhira, Khulna, Bagerhat, Barisal, Patuakhali, Bhola, Barguna, Pirojpur and Patuakhali districts and providing emergency medical care, mostly first aid.

The Disaster Management Information Centre is the information hub of the Ministry of Food and Disaster Management for risk reduction, hazard early warnings and emergency response and recovery activities

- The DGHS Control room at central and coastal districts have been made operational on 24/7 basis and all the Civil Surgeons of coastal districts are directed to initiate treatment to the affected population.
- While contacted, all the concerned Civil Surgeons mentioned that they have sufficient logistics to combat any immediate emergencies, if occurs following to the cyclone 'Aila'.
- The Programme Manager, EHA & Assistant Director, Disaster, DGHS has advised all the EPR, Rapid Response Team at the district and Upazila levels to be fully alert and report of any situation that may arise from the consequences of cyclone.
- With the technical support from WHO, the DGHS will undertake Rapid Needs Assessment (RNA) to assess the loss and needs of health sector followed by the cyclone Aila.

[Source: WHO; Data Date: May, 26, 2009]

### Relief Activities for Cyclone "AILA"

Sl. No.	Division	District	GR Rice		GR Cash		House Building	
			Previous Allocation MT	Allocation from 25-May-09 MT	Previous Allocation BDT	Allocation from 25-May-09 BDT	Previous Allocation BDT	Allocation from 25-May-09 BDT
1	2	3	4	5	6	7	8	9
1	Barisal	Barisal	350.000	200.000	850000		250000	
2		Barguna	250.000	1700.000	150000	1700000	150000	
3		Bhola	400.000	2900.000	700000	3600000	100000	
4		Patuakhali	350.000	1500.000	450000	2700000	200000	
5		Pirojpur	250.000	500.000	100000	500000	50000	
6		Jhalokathi	100.000	200.000	50000	200000	100000	
7	Khulna	Khulna	350.000	3000.000	350000	3000000	50000	
8		Satkhira	350.000	1450.000	2984300	4000000	50000	
9		Bagerhat	250.000	1000.000	300000	2100000	200000	
10	Chittagong	Noakhali	300.000	600.000	350000	1000000	250000	100000
11		Laxmipur	200.000	500.000	350000	200000	250000	100000
12		Feni	200.000	0.000	100000		100000	
13		Chittagong	450.000	500.000	850000	500000	150000	
14		Cox's Bazar	300.000	0.000	800000		150000	
		<b>Total</b>	<b>4100.000</b>	<b>14050.000</b>	<b>8384300</b>	<b>19500000</b>	<b>2050000</b>	<b>200000</b>

18150.000

27884300

2250000

[Source: Directorate of Relief and Rehabilitation; Data Date: May, 29, 2009]

In addition to above the following relief activities by the GoB also has also been taken:

District Name	Allocated to Districts from MoFDM/DRR	Distribution by DC Office
Barisal		Dry food equivalent to BDT 15000 distributed.
Bhola	Saree 1200 pcs Water purification tablet 01 carton Flattened rice 2000 kg Molasses 500 kg	Flattened rice 1200 kg, molasses 500 kg, saree 900 pcs, water purification tablet 2 carton
Pirijpur	Saree 1000 pcs Lungi 1000 pcs Flattened Rice 1000 kg Molasses 300 kg	
Patuakhali	Saree 2500 pcs Water purification tablet 01 carton Pure water 2000 liter	Saree 800 pcs, water purifying tablet 1 carton, pure water 2000 liter

The Disaster Management Information Centre is the information hub of the Ministry of Food and Disaster Management for risk reduction, hazard early warnings and emergency response and recovery activities

Barguna	Saree 800 pcs Water purification tablet 01 carton	Saree 800 pcs, Pure drinking water, flattened rice, puffed rice and jerry can 800 pcs, water purifying tablet 1 carton
Khulna	Saree 3800 pcs Lungi 2000 pcs Flattened Rice 800 kg Molasses 500 kg	Saree 1800 pcs, Flattened rice 800 kg, Molasses 500 kg, Jerry cans 4200 units, Tent 150 pcs
Bagerhat	Saree 2000 pcs Lungi 1500 pcs Water purification tablet 01 carton	Saree 500 pcs, Water purification tablet 01 carton, Flattened rice & Molasses equivalent to BDT 24,078
Satkhira	Saree 5200 pcs Lungi 2000 pcs Water purification tablet 01 carton Pure water 1150 liter Flattened Rice 1000 kg Molasses 500 kg Medicine 1 carton	Saree 550 pcs, Flattened rice 2430 kg, Molasses 1285 kg, Pure drinking water 25000 liter, candle sticks 12000 pcs, match box 12000 pcs, saline 12000 pcs.
Chittagong		Saree 200 pcs
Laxmipur	Saree 800 pcs	
Noakhali	Saree 800 pcs Flattened rice 1000 kg Molasses 300 kg Pure drinking water 500 liter	

[Source: Relief Control Cell, Ministry of Food and Disaster Management; Data Date: May, 29, 2009, 14:30 BST]

### Preliminary Damage Report in Coastal Areas

#### Barisal

Gusty/squally wind passed the town around 5:00 am. 80 percent area of the district flooded due to squally wind and increase of water. 150 houses uprooted and many other affected. 20 persons reported injured, 1 of them admitted into hospital with severe trauma. People were taken to the shelter. District administration remains in alert and standby.

#### Bhola

Vast area flooded as ring embankment breached at many places due to wind driven surge. Chafassion and Tazumuddin upazilas were comparatively more affected. Most of the areas of Dauchar, Charkukrimukri, Charpatila of Charfession were inundated. People were taken to the shelter. 1 person died in Charfession as boat drowned. Other 2 persons of Sadar upazila were reported missing. 1 person badly injured as house collapsed on him. Water started to recede.



#### Pirojpur

Gusty and squally wind occurred at some places last day evening but already stopped. Charbolehsvar, Khelputua and Prottyashi villages of Zianagar inundated by 2-2.5 ft water as Wapda ring embankment breached. People took shelter at cyclone shelters. Water level of the Telikhali, Charkhali and Hetalbungia rivers of Bhandaria was increased by 1-1.5 feet. Water entered into Mathbaria by crossing Majherchar ring embankment and the vast area inundated under 6-7 feet

The Disaster Management Information Centre is the information hub of the Ministry of Food and Disaster Management for risk reduction, hazard early warnings and emergency response and recovery activities

water. Many people took place in the shelter. The RHD road of Kaukhali went under water by 1-1.5 feet. But water already started to decrease.

### **Barguna**

Low lying areas of most of the upazilas inundated. Water entered into Sadar, Amtoli and Patharghata as embankment in this upazilas infringed. District administration informed that water level started to decrease.

### **Jhalokathi**

Water level increased due to wind driven surge and water entered into low lying areas, specially Kathalia upazila. Water level started to decrease.

### **Bagerhat**

Southkhali of Sharankhola flooded as the WDM embankment cracked due to heavy water pressure. Rainda bazaar inundated under 3 feet water. Water is flowing over 1.5 feet on LGED road at Dhila union of Mongla upazila. Municipality areas of Mongla and Morelganj inundated under 1.5-2 feet water. Municipality area of Sadar upazila also submerged. 11 bags (65 kg in each) of flatten rice, 120 kg molasses and huge amount of water purification tablet sent to the affected areas.

### **Patuakhali**

1 person died in Bauphal as tree cracked down on the person. One another aged person of same upazila died in cyclone shelter due to sudden hit of stroke. Another infant in Galachipa died as she slipped off of her mother while the mother was moving to the shelter. The height of tide was higher than that of normal astronomical tide. All upazilas were inundated by wind driven surge. Total number of people at cyclone shelters was 92,500. 9,500 people at Golachipa were rescued with help of Coast Guard. Wapda embankment breached at 26 points and vast area at these points inundated. Dashmina and Galachipa inundated. Medical team formed. District administration informed that water already started to reduce.

### **Satkhira**

Shayamnagar and Asasuni upazila were affected by wind driven surge which was 4-5 feet above normal astronomical tide. 9 unions of Shayamnagar and Asasuni were flooded adversely. Total 88 km of ring embankments damaged and 1 lakh people were affected in these 2 upazilas. 96 and 40 shelters were opened in Shayamnagar and Asasuni upazilas respectively. Dwellers of Kaliganj and Debhata upazila were also water logged. Army, Navy, Coast Guard and volunteers of different Government and non-government organizations have been involved in rescuing, relief and rehabilitation.



AILA affected area

### **Chittagong**

1000 families of Bashkhali upazila water logged. Houses 37 families damaged. 500 families affected in Shandwip as water entered into by flowing over the embankment. Few areas of Anwara upazila also flooded.

### **Laxmipur**

Few areas of Kamalnagar, Ramgati, Sadar and Raipur upazila partially inundated. Chargazaria and Chartelirchar largely inundated. Some of thatched/earthen houses of these areas damaged due to heavy gusty/squally wind. 2 people died in Ramgati as houses collapsed.

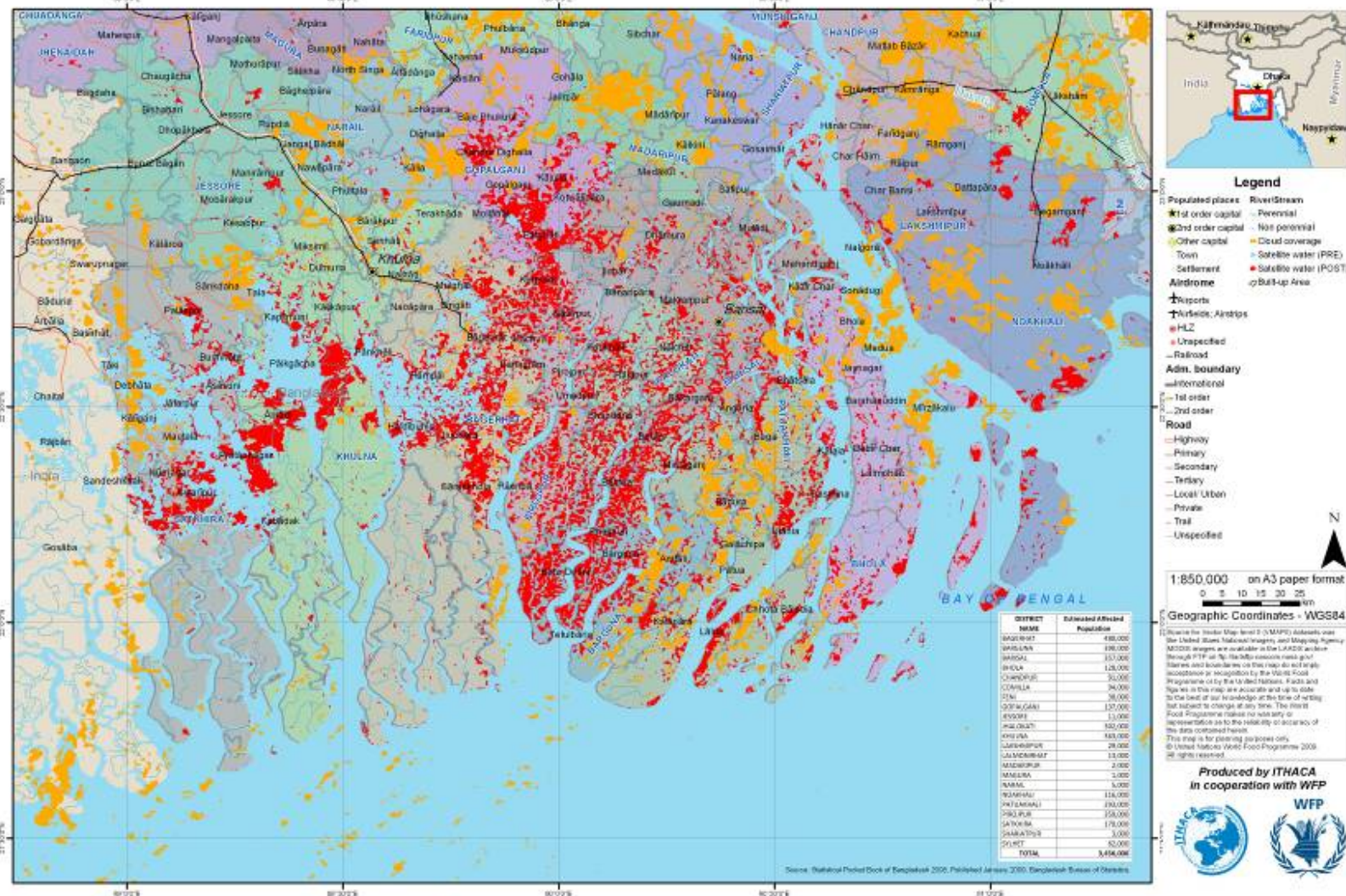
The Disaster Management Information Centre is the information hub of the Ministry of Food and Disaster Management for risk reduction, hazard early warnings and emergency response and recovery activities

# Bangladesh - Tropical Cyclone AILA - Affected areas as of May 27, 2009

Analysis based on Modis satellite data

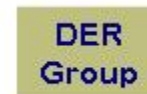
Publication date: 27/05/2009

TC-2009-000105-BGD



Courtesy: ITHACA and WFP

The Disaster Management Information Centre is the information hub of the Ministry of Food and Disaster Management for risk reduction, hazard early warnings and emergency response and recovery activities



## Cox's Bazar

Wind driven surge of 5-7 feet above normal astronomical tide caused inundation in many areas. 1 infant reported died. Most of areas around Himchhari of Ramu upazila flooded and crack found on few places of Himchhari road. 1500 feet of Wapda embankment infringed and low lying areas inundated. Embankment in Kutubdia also breached and many people was taken to shelter. Tidal water entered into Shah Parir deewep of Teknaf.

## Noakhali

Hatiya badly affected and flooded due to wind driven surge of height above normal astronomical tide. 2 people died in Hatiya as house collapsed. Another drowned in the tide. District administration reported following damage:

Affected union-12, affected area-150 sq. KM., affected people-12000, affected family-2400, damaged houses-1200, damaged road (earthen/partial)-40 km, damaged embankment (partial)-5 km. 5 MT GR rice allotted to Hatiya upazila from DC office.

[Source: Relief Control Cell, Ministry of Food and Disaster Management; Data Date: May, 26, 2009]

## Damage Report of Cyclone "AILA"

SL No	Name of District	No. of affected upazila	No. of affected union/Pourasava		No. of Affected Family	No. of Affected People	Damaged Crops (Acre)		Damaged Households		No. of death	No. of injured people	No. of missing people	No. of livestock death	Affected Educational Institute		Damaged Road (km)		Damaged Bridge/Culvert	Damaged Embankments (km)	People took Shelter
			Full	Partial			Full	Partial	Full	Partial					Full	Partial	Full	Partial			
			4	5			8	9	9	10					11	12	13	14			
1	Barisal	10		72	63203	267105	0	15592	368	6726	7	121		6140	0	274		692		25.3	
2	Bhola	7	67		89869	413709	7960	22023	20266	47185	17	226	10	10377	158	485		1817		219	
3	Pirojpur	7	11	41	66552	248470		55107	2705	24380	1			14449		172	295	631	80	33.48	
4	Patuakhali	7	25	47	139326	615785	14262	83736	34061	70695	8	610		530		26		135		301	15000
5	Borguna	5	21	17	60445	284079	36620	52660	3920	19658				17294	24	238	83	213		77.57	
6	Jhalokathhi	4		34	69416	396877	11644	11621	2888	24800				23197	63	793	250	832.8	94	132.05	
7	Khulna	5	26	21	111386	506926	1854	3980	48400	46458	38	473		16824	10	253	281	517	2	514	66850
8	Bagerhat	5	22	27	56614	234237	1537	1106	2407	39060	4			1121		308	37.8	614	31	42	3000
9	Satkhira	7	10	68	128229	563783	531	183	105767	50631	48	5407		15004	142	282	180	99	41	117	93837
10	Chittagong	3	5	12	4066	13530	235	234	673	1638	1	10		100	10	32	31	111.5		20	
11	Laxmipur	4	3	14	2628	12371	350	4671	657	1561	7	6		793		19		37		1	
12	Noakhali	3	4	15	9868	49244	127	1373	3499	5912	24	255		6002	10	54	40	100		63	
<b>Total</b>		<b>67</b>	<b>194</b>	<b>368</b>	<b>801602</b>	<b>3606116</b>	<b>75120</b>	<b>252286</b>	<b>225611</b>	<b>338704</b>	<b>155</b>	<b>7108</b>	<b>10</b>	<b>111831</b>	<b>417</b>	<b>2936</b>	<b>1198</b>	<b>5799.3</b>	<b>248</b>	<b>1545.4</b>	<b>178687</b>
			<b>562</b>				<b>327405.98</b>		<b>564315</b>												

### Note:

- Chandpur, Feni and Cox's Bazar excluded from the D-Form.
- People of Barisal, Bhola, Pirojpur, Barguna, Jhalokathhi, Chittagong, Laxmipur and Noakhali, who took shelters, returned to their own residences
- In previous damage report on May 28, 2009, due to typing mistake in the column, "number of missing people" in Bagerhat district was shown 1121; actually the "number of missing people" in this district is "0" (zero, i.e., no missing people); and the number 1121 is actually for the next column "number of dead livestock" for the same district.

[Source: Relief Control Cell, Ministry of Food and Disaster Management; Data Date: May, 29, 2009, 14:30 BST]

The Disaster Management Information Centre is the information hub of the Ministry of Food and Disaster Management for risk reduction, hazard early warnings and emergency response and recovery activities

