

FLOOD SITUATION REPORT 2008

Report # : 03
Reporting date : August 31, 2008

Present Situation:

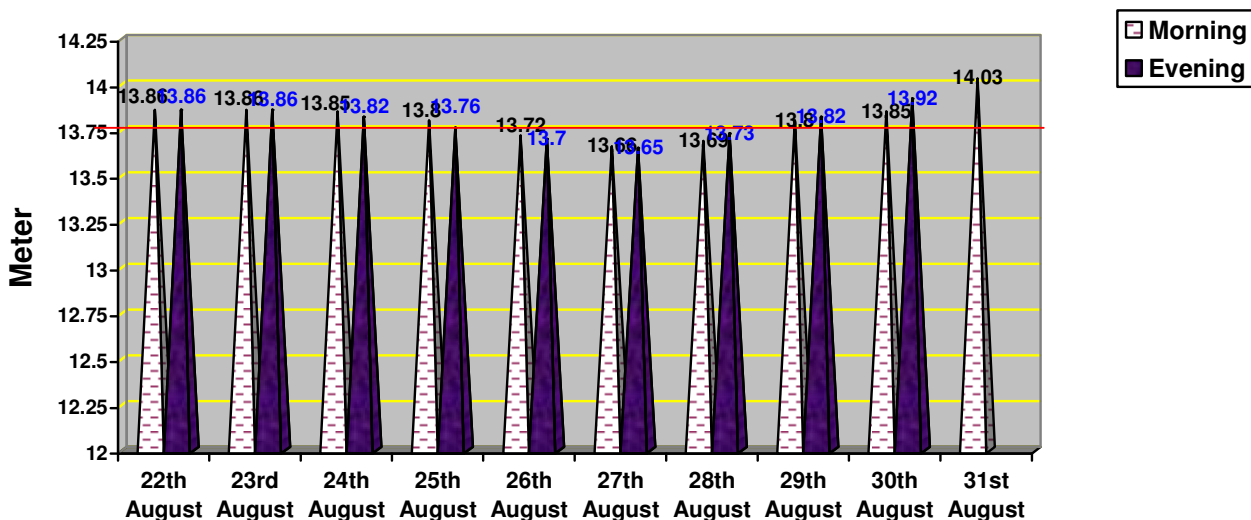
Sirajgonj district is one of the disaster prone areas in Bangladesh. Flood is a common feature. The total population of the district is 3 million. Of the 9 Upazilas 5 are more vulnerable to flood. Most of the people thought that there will not be major flood in this year. Unfortunately from the 19th of August 2008 the river water in the different points started to increase and on 21st August the water crossed danger level. Though the water level decreased again but due to heavy rainpour the water started to increase again and crosses the danger level on **29.08.2008**. The water level is flowing **28 cm above the danger level**. A major part of the 9 Upazilas in the district started to inundate and people marooned. The flood water started to engulf and destroy fields after fields. As a result crops have been destroyed. Many homes have gone under water, which damaged the houses of the poor people. The water level of river Jamuna in Sirajgonj point (to-day 6 a.m) blows above 28 cm of danger level. **From yesterday morning (30.08.08) to today morning (31.08.08) the water level increased 18 cm**. The water level is increasing every where in Bramapurra, Tista and Jamuna as ---India has opened it ---- Dam. Thus further increase of water is expected by the Water Development Board. Due to the increase of flood level more and more villages has been flooded, more houses have gone under water, more crops have been damaged and sufferings of the people increased.

Many places erosion turned serious; so far 1,535 families have been eroded. In this situation emergency food and non-food support as well as rehabilitation programme is essential for the victims.

Table-1: Water level trend analysis

| Date | Danger level | Water Level | | Source |
|----------|--------------|-----------------|----------------|------------------|
| | | Morning | Evening | |
| 22.08.08 | 13.75 meter | 13.86 m. | 13.86 m. | WAPDA, Sirajganj |
| 23.08.08 | 13.75 meter | 13.86 m. | 13.86 m. | WAPDA, Sirajganj |
| 24.08.08 | 13.75 meter | 13.85 m. | 13.82 m. | WAPDA, Sirajganj |
| 25.08.08 | 13.75 meter | 13.80 m. | 13.76 m. | WAPDA, Sirajganj |
| 26.08.08 | 13.75 meter | 13.72 m. | 13.70 m. | WAPDA, Sirajganj |
| 27.08.08 | 13.75 meter | 13.66 m. | 13.65 m. | WAPDA, Sirajganj |
| 28.08.08 | 13.75 meter | 13.69 m. | 13.73 m. | WAPDA, Sirajganj |
| 29.08.08 | 13.75 meter | 13.80 m. | 13.82 m. | WAPDA, Sirajganj |
| 30.08.08 | 13.75 meter | 13.85 m. | 13.92 m | WAPDA, Sirajganj |
| 31.08.08 | 13.75 meter | 14.03 | | |

Water level trend analysis (Flood-2008)



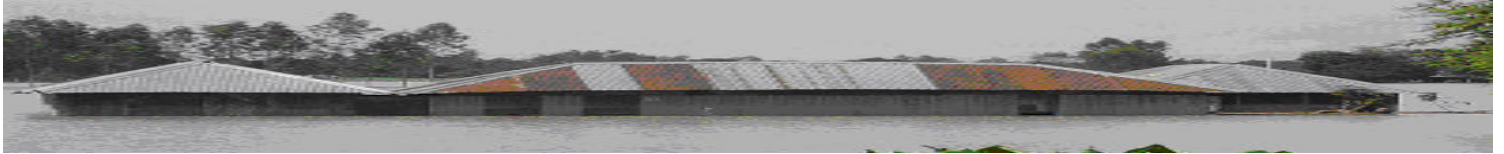


Table-2: At a glance Flood affected/damage status:

| Name of Upazila | Total Union | Affected | | | Damage | | | | Flood Shelter | | Remarks |
|--------------------|-------------|-----------|---------------|----------------|--------------|------------|-----------------|--------------|--------------------|-----------------------|---|
| | | union | # HH | Population | Crops (Acor) | Roads (km) | Bridge /Culvert | House | # of Flood Shelter | Populati on sheltered | |
| A | B | C | D | E | F | G | H | I | J | K | |
| 1. Sirajganj Sadar | 10 | 6 | 2200 | 12,000 | 700 | | 0 | | | | Due to river erosion 2 villages have totally been eroded where about 250 families have been eroded. |
| 2. Kazipur | 12 | 8 | 3200 | 22000 | 1500 | 7 | 0 | 3420 | 9 | 1700 | |
| 3. Chawhali | 7 | 6 | 7500 | 50000 | | | 0 | | | | Due to river erosion 10 villages have totally been eroded where about 1250 families have been eroded. |
| 4. Shahjadpur | 13 | 7 | 5000 | 22000 | 1200 | 8 | 0 | 740 | 0 | 0 | |
| 5. Belkuchi | 6 | 4 | 1500 | 5200 | 750 | | 0 | | | | Due to river erosion 35 families have eroded. |
| 6. Ullahpara | 13 | 13 | 5150 | 17000 | 1750 | 8 | 0 | 1750 | 0 | 480 | |
| 7. Tarash | 8 | 6 | 1700 | 5400 | 700 | 5 | 0 | 1100 | 0 | 350 | |
| 8. Raiganj | 9 | 3 | 1,375 | 3145 | 885 | 9 | 0 | 540 | 0 | 380 | |
| 9. Kakarkhond | 4 | 1 | 60 | 240 | 70 | 0 | 0 | 15 | 0 | 70 | |
| Total | 82 | 54 | 27,685 | 136,985 | 5355 | 68 | 0 | 13315 | 21 | 9980 | |

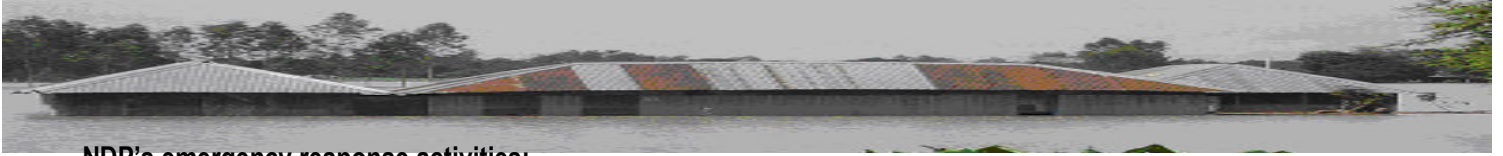
Upazila wise affected Union and household shown in the below table:

| District | Upazila | #s of Affected UP/PS | Name of Affected Union/Ward | # of affected HHs | # of badly affected HHs |
|--------------|-----------------|----------------------|--|-------------------|-------------------------|
| Sirajgonj | Sirajgonj Sadar | 5 | Meshra, Kawoakhola, Ratankandi, Songacha, Khokshabari and Pourashava | 2200 | 1200 |
| | Kazipur | 8 | Natuarpara, Chargrish, Nischintopur, Tekani, Khash Rajbari, Monsumagar, Kazipur Sadar and Majibari | 3200 | 1500 |
| | Chowhali | 7 | Stall, Omarpur and Ghorzan | 5000 | 2150 |
| | Shahazadpur | 8 | Kojjuri, Sonatoni, Rupbati, Porjana, Beltoli, Narina, Potazia and Gala | 5000 | 1200 |
| | Belkuchi | 4 | Belkuchi Sadar, Bardul, Daulatpur and Rajapur | 1500 | 750 |
| | Ullahpara | 13 | Bangala, Barahar, Bara Pangashi, Durganagar, Mohanpur, Panchokurshi, Pumimagat, Ramkrishnopur, Udhunia, Salap, Salanga, Hatikumrul and Ullahpara | 5150 | 1750 |
| | Tarash | 6 | Talom, Magurabinod, Baruhas, Saguna and Tarash. | 1700 | 700 |
| | Raigonj | 3 | Brahmagacha, Pangashi and Nalka. | 1375 | 885 |
| | Kamarkhond | 1 | Bhadroghat | 60 | 15 |
| Total | | 55 | | 25185 | 10150 |

Disaster Emergency Response by the Local Administration of Sirajgonj District:

As per on 24.08.08 local administration (DRRO) distributed 31 MT rice among the flood victims of Sirajganj Sadar, Shajadpur, Kazipur and Bulkuchi Upazila. The Administration has taken recent initiative to collect damage information.





NDP's emergency response activities:

In response to the flood 2008, with the support of DFID under Chars Livelihoods Programme (CLP) NDP and other 2 partner are distributing bucket and water purifying powder PO among the flood victims of Belkuchi, Sirajgonj Sadar, Shajadpur, Chouhalia and Kazipur Union. NDP has made available 7 engine boats and more than hundred volunteers to work in any situation.

Condition and emergency needs of the affected people:

The badly affected poor people are also could not manage their other daily essential commodities causing lack of money and are living in a very miserable condition. The said flood victims need the emergency food support, ORS, essential medicine and sanitation facilities. On the other hand baby food and cattle feed support is also very much essential. At the same time, the peoples need to be supported with fencing/shed materials like- tent/plastic sheet/polythene paper as they could temporarily manage their shelter immediately. NDP is also keeping close contact with the District, Upazila and union DMC and the local administration. It advised all the staff and volunteers to send flood situational information/repot on a regular basis. In the humanitarian ground to serve the essential needs of the flood affected people both the GO/NGOs need to continued their services to the affected people in the area of food, drinking water, medical service with medicine, shelter and other essential commodities.

Md. Alauddin Khan

Director, NDP

Date: 31.08.08

