



WFP Bangladesh Report on

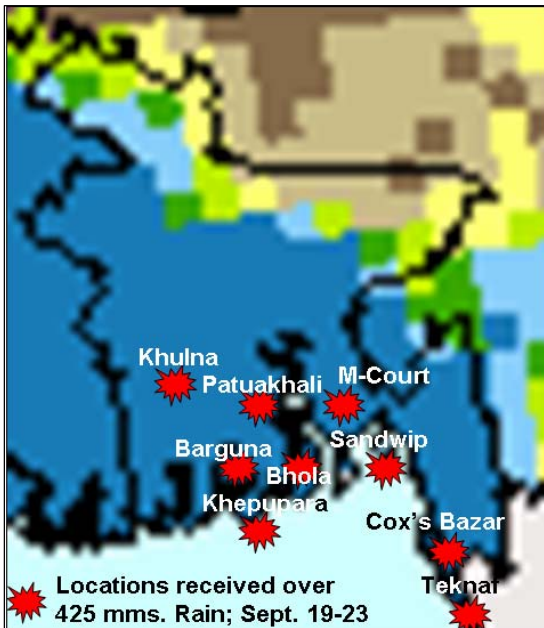
**EARLY WARNING AND  
MONITORING**

Issue 10

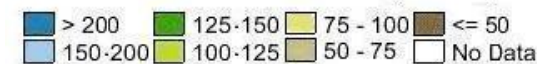
5 October 2006

**HIGHLIGHTS**

- Coastal Bangladesh was hit by a severe storm and tidal surge on the evening of 19<sup>th</sup> September followed by three days of continuous heavy rain. This caused localized flooding and considerable hardship for the affected population.
- The same severe weather further worsened the water-logging situation in the Southwest districts of Jessore, Satkhira and Khulna.
- Late September rain benefited Aman rice planting in Northwest Bangladesh.
- The precipitation forecast for the period of 4<sup>th</sup> October thru 10<sup>th</sup> October suggests light to moderate rain for most of the country.



**Locations received over 425 mms. Rain; Sept. 19-23**



**EXCESSIVE RAINFALL/ STORM IN  
SOUTHERN COASTAL BELT**

A severe storm originating from the Bay of Bengal during late September (19<sup>th</sup> – 22<sup>nd</sup>) reportedly resulted in over 100 deaths with many more missing in the coastal regions. Much of the country, especially the coastal belt areas have experienced heavy rainfall during the recent period. Some locations received over 150 mms in a single day (source: FFWC). Localized flooding occurred in low-lying areas leaving thousands of people homeless especially in the fishing community. The storm destroyed newly transplanted Aman rice crop, and washed away shrimp enclosures and flood control embankments.

WFP, together with its NGO partners (Islamic Relief and SCF-US) are distributing high energy biscuits for worst affected populations to address food security needs. The Disaster and Emergency Response/DER group; a forum for GoB, UN agencies and NGOs held an emergency meeting on 24<sup>th</sup> Sept to coordinate response amongst DER members.

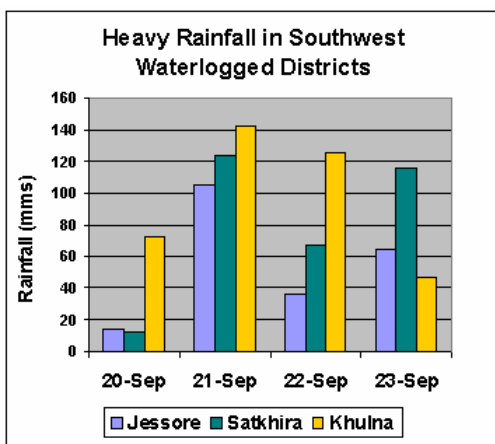
Map Source:  
[www.pecad.fas.usda.gov/cropexplorer/imageview.cfm](http://www.pecad.fas.usda.gov/cropexplorer/imageview.cfm)

Disclaimer: The data and views expressed in this report do not represent the official position of the United Nations, the World Food Programme, nor any other United Nations member state.



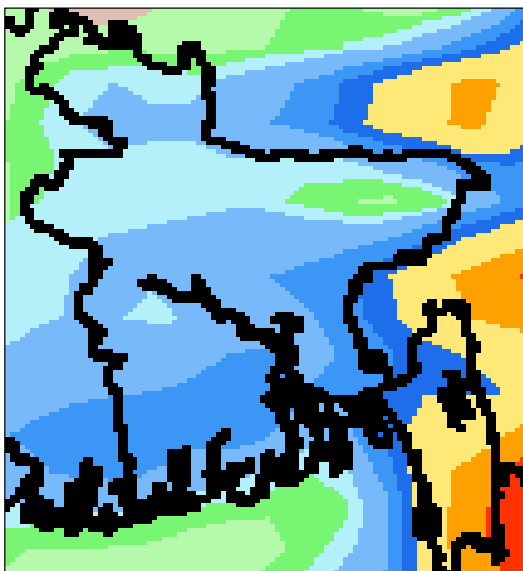
### LATE SEPTEMBER RAINS BENEFIT AMAN RICE PLANTING IN NORTHWEST BANGLADESH

Recent concern regarding insufficient Monsoon rains, and their negative impact on Aman rice planting in the Northwest has eased due to increased late September rainfall. Precipitation in the region (Rajshahi Division) was less than half of normal, during the first three weeks of September (source: BMD). However, because of favorable rains during late September, the situation has improved significantly. While the outcome of the actual Aman rice harvest will not be known until December/January, the outlook is substantially brighter relative to our earlier reports in previous bulletins.



### FLOOD SITUATION MONITORING/ SOUTHWEST WATERLOGGING

The Southwestern districts of Jessore, Satkhira and Khulna continue to suffer from seasonal water logging. Although rainfall in early September was relatively light, the situation took a turn for the worse with heavy rain later in the month. The same storm which wreaked havoc on the coast (see page-1 map) also brought hardship to inland areas. According to FFWC, daily rainfall of 50 mms or more can cause stress on local drainage systems, potentially contributing to localized flooding (see related graph on the left). The GoB, NGOs and UN agencies (WFP & UNICEF) have increased their relief assistance to affected populations.



### RAINFALL FORECAST

The cumulative rainfall forecast for the period 4<sup>th</sup> thru 10<sup>th</sup> October as depicted on the map on the left, is predicted to range between 15-40 mms for most of the country. Notable exceptions include the extreme Southeastern Bandarban and Cox's Bazar districts where as high as 100 mms of rain are expected.

The data used to generate the rainfall map originates from the US based NOAA (National Oceanic and Atmospheric Administration) Climate Prediction Center (CPC). More detailed information is available from the CPC website at: <http://www.cpc.ncep.noaa.gov>

Comments on this report can be sent to [john.mcharris@wfp.org](mailto:john.mcharris@wfp.org) with a cc: to [malik.kabir@wfp.org](mailto:malik.kabir@wfp.org)

This Report is also available on LCG website at: <http://www.lcgbangladesh.org/subGroup.php?q=1&s=1>

