



WFP Bangladesh Report on

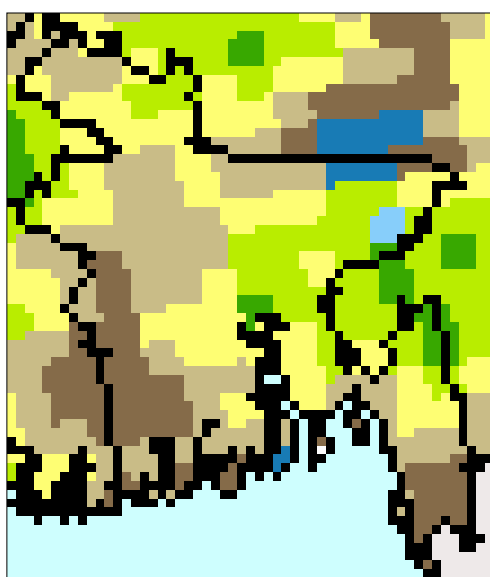
EARLY WARNING and
MONITORING

Issue 5

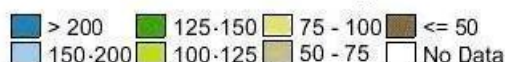
9 July 2006

HIGHLIGHTS

- § Rainfall was below average for much of the country during the period 21st June thru 30th June.
- § Heavy rains during the most recent period of 6th July to 9th July contributed to localized flooding, particularly in the Northeast (near Sylhet) and in the Southeast (Chittagong Hill Tracts/CHT). The monsoon rains and land slide have damaged houses, fish ponds and road network.
- § Most river levels in the Meghna and the South Eastern Hill basin have risen which warrant close monitoring.
- § The rainfall forecast for the coming period (9th July thru 15th July) shows particularly heavy rain expected for a few areas of the country including most of the Chittagong Hill Tracts as well as Gazipur, Narshingdi, Brahmanbaria and parts of surrounding districts. Also parts of Nilphamari, Rangpur and Dinajpur districts in the Northwest are expected to have heavy rainfall.



Dekadal Percent of Normal Rainfall (21-30 June 2006)



RAINFALL DISTRIBUTION/
MONSOON SEASON

Rainfall during the 3rd dekad (21-30) of June was below average for much of the country; especially in parts of the extreme Southeast and Southwest of the country where less than 50% of average rainfall was estimated.

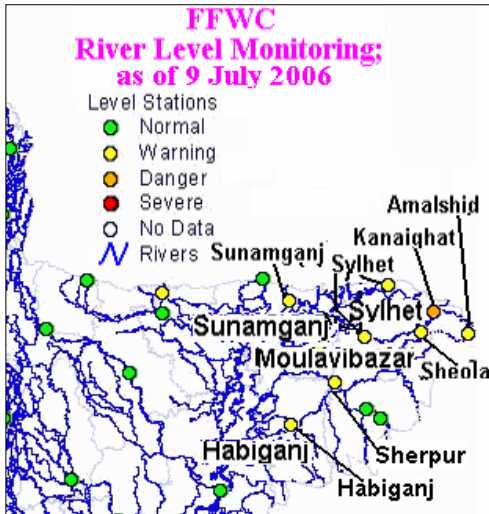
According to the Bangladesh Meteorological Department (BMD) and the Flood Forecasting and Warning Center (FFWC), Sylhet station received highest daily rainfall of around 170 mms and 160 mms on the 27th June and 7th July respectively. Sunamganj received highest rainfall of around 220 mms on the 6th of July.

The map featured in this section is taken from the United States Department of Agriculture Foreign Agricultural Service website, where related and more detailed information is available:

<http://www.pecad.fas.usda.gov/cropexplorer/imageview.cfm?regionid=sasia>.

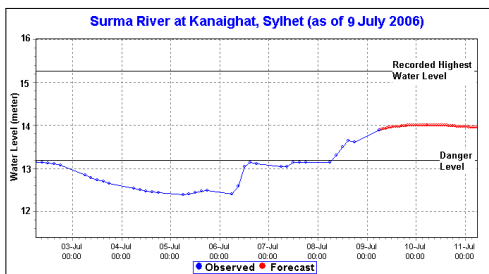
Disclaimer: The data and views expressed in this report do not represent the official position of the United Nations, the World Food Programme, nor any other United Nations member state.

FLOOD SITUATION MONITORING



Based on the Flood Forecasting and Warning Center data as of 9th July, all rivers in the Meghna and the South Eastern Hill basin are flowing below danger level except the Surma river in Meghna basin which is flowing above danger level at Kanaighat, Sylhet. However, most of the rivers have been observed to rise which warrant a need for close monitoring .

The FFWC has issued a warning, as of the 8th/9th July, stated that “Due to heavy and concentrated rainfall, urban rain-fed flood has been occurred in the districts of Chittagong, Khagrachari and Bandarban which is likely to deteriorate with further expected rainfall. The prevailing flood situation in the district of Sylhet is likely to remain unchanged.” Additional information is available from the FFWC website at: <http://www.ffwc.gov.bd>



According to a report issued by WFP Dhaka Regional Office on 9th July, the overall flood situations in Sylhet, Sunamganj, Moulavibazar and Habiganj districts are not alarming although some low -lying areas have been inundated due to most recent heavy monsoon rainfall. WFP Dhaka Regional office is closely monitoring the overall situation.

Localized flash flooding in the Chittagong Hill Tracts was reported by WFP’s CHT Regional Office. Heavy rainfall and onrush water from the hills have inundated some areas of Chittagong, Bandarban, Khagrachari and Cox’s Bazar districts. The flood water and land slide have damaged houses and local road network has been disconnected at some places . According to BMD and FFWC, the highest daily rainfall recorded in Bandarban was 255 mms on 7th July, 132 mms in Chittagong on 8th July and 156 mms in Cox’s Bazar on 8th July. The following forecast indicates a need for further close monitoring of these places .

RAINFALL FORECAST

According to rainfall forecast map from the US based NOAA (National Oceanic and Atmospheric Administration) Climate Prediction Center (CPC), the cumulative rainfall for the period 9th - 15th July is expected to be 100 mm or more for most of the country. Areas warranting close monitoring include Chittagong, Cox’s Bazar, Bandarban and part of Khagrachari and Rangamati where more than 150 mms of rain are expected. Other high rainfall expected areas are Gazipur, Narshingdi, Brahmanbaria and part of Dhaka, Tangail, Mymensingh, Kishoreganj, Narayanganj, Manikganj, Nilphamari, Rangpur and Dinajpur.

More detailed information is available from the CPC website at: <http://www.cpc.ncep.noaa.gov>

Comments on this report can be sent to john.mcharris@wfp.org with a cc: to malik.kabir@wfp.org

